



JC1945S23 - Short Platform Janitorial Cart - Gray



Item Number:
JC1945S23

Case Pack:
1 ea

- Rugged polypropylene resists cracking, peeling and corrosion
- Three durable shelves with raised edges keep items organized
- Includes a 25 gallon nylon bag for waste or laundry collection
- 3" standard Carlisle non-marking swivel casters in front
- 8" non-marking rear wheels
- Platform base is 17.75" x 17.75"; will hold a Bucket/Wringer combination or 23 gal TrimLine™ Waste container
- Optional tool caddy (JC1945CB23) fits the top shelf of long and short platform carts



Tech Specs

	US	Metric
Length	45.00 in	114.30 cm
Width	19.00 in	48.26 cm
Height	39.00 in	99.06 cm
Min Temperature	-50.00 °F	-45.56 °C
Max Temperature	120.00 °F	48.89 °C
Bottom Shelf Length	17.75 in	45.09 cm
Bottom Width	17.75 in	45.09 cm
Material	Polyethylene (LLDPE)	
Country of Origin	China	
Each UPC	077838813522	
Case GTIN	10077838813529	

Tech Specs

	US	Metric
Case Weight	33.00 lb	14.97 kg
Case Cube	4.45 ft ³	0.13 m ³
Case Length	34.70 in	88.14 cm
Case Width	10.30 in	26.16 cm
Case Height	21.50 in	54.61 cm
Pallet Case Qty	10	
Pallet Tier	5	
Pallet High	2	
Harmonized Code	940370.8031	
Freight Class	100	

Related Products

Product	Description	Case		
		Pack	Weight	Cube
Replacement Parts				
JC1946	Replacement Bag for Janitorial Cart (JC1945)	1 ea	1.14 lb	0.06 ft ³
Accessories				
36909	Flo-Pac® Economy Wet Floor Sign (English/Spanish/German) 25"h x 11"w	6 ea	12.60 lb	1.45 ft ³

Product	Description	Case		
		Pack	Weight	Cube
JC1945CB	Tool Caddy For Janitorial Cart	6 ea	8.25 lb	1.52 ft ³

Copyright © 2017 Carlisle FoodService Products. All rights reserved.

ASSEMBLY INSTRUCTIONS FOR JANITOR CART

PRODUCT NUMBERS: JC1945S, JC1945L

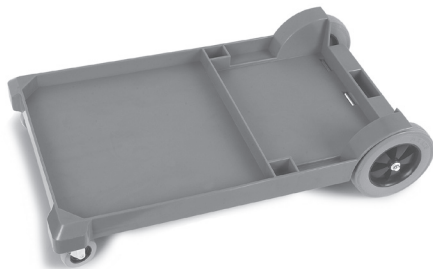
PARTS:

- (1) Base Assembly with Wheels & Casters
- (2) Side Upright
- (1) Back Upright
- (1) Middle Utility Shelf
- (1) Top Utility Shelf
- (1) Handle
- (1) Trash Bag
- (10) 1" Bolt
- (3) 1-1/2" Bolt
- (2) Bolt Cap (blue)

TOOLS:

- 3/16" Hex Wrench (included)
- Rubber Mallet

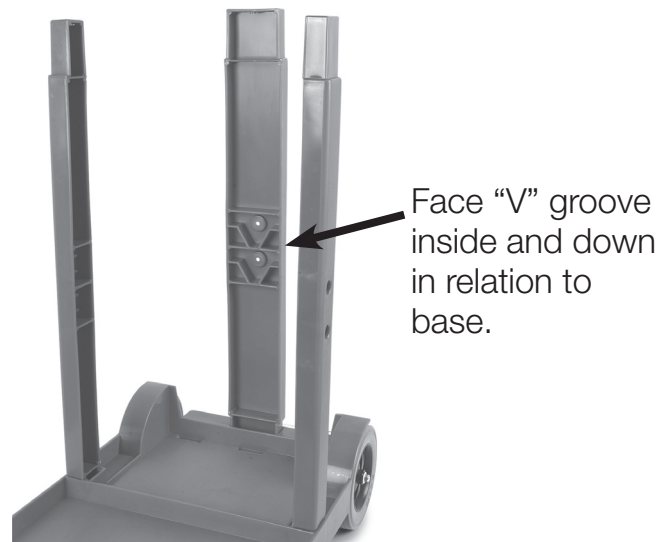
1. Place base assembly upright on a firm even surface.



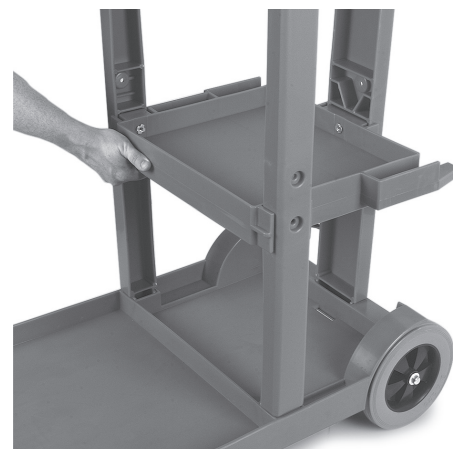
2. Insert the short end of the two side upright into slots on the base as shown and tap into place with mallet.



3. Insert the short end of the back upright into slot as shown and tap into place.



4. Slide middle utility shelf onto uprights as shown. Choose either high or low position and slide post on each side of shelf into corresponding slot on each upright. Tap into place with the mallet.

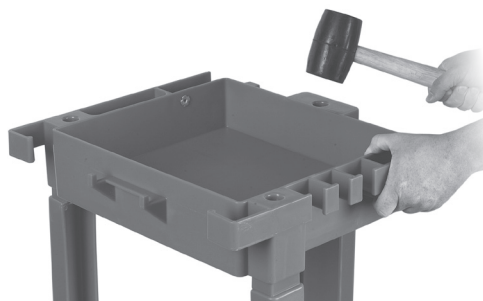


© 2013 Carlisle FoodService Products
Oklahoma City, OK 73131
www.carlislefsp.com | 800-654-8210

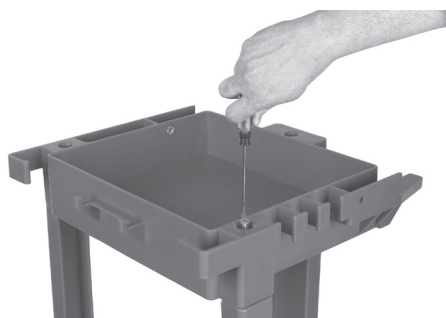
5. Use three 1-1/2" bolts inserted from outside to lock shelf in place.



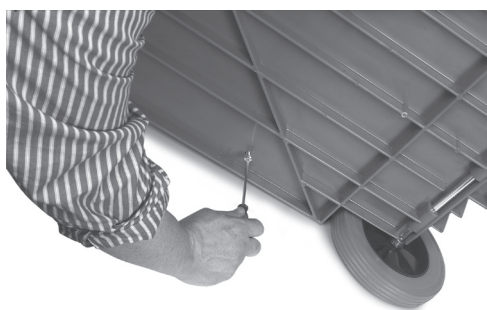
6. Place top shelf onto upright ends and tap into place.



7. Use three 1" bolts inserted from top to lock shelf into place.



8. Turn cart on side and secure uprights to base using three 1" bolts.



9. Place "U" Shaped bag rack into slots and use two 1" bolts from each side to lock into place.



10. Place bolt caps on ends of bolts.



11. Place bag onto hooks inside "U" shaped frame.



© 2013 Carlisle FoodService Products
Oklahoma City, OK 73131
www.carlislefsp.com | 800-654-8210