



# Contempo<sup>®</sup>

...A Contemporary  
Approach to  
Maintaining Today's  
Carpeting



## Contempo®...

### **A Contemporary Approach to Maintaining Today's Carpeting**

Soft, warm and inviting...the atmosphere carpeting creates is why 95 percent of American households install carpeting. Of all floor coverings, carpet is 65-70 percent of the flooring market. Maintaining carpet at a high appearance level not only extends the life of carpet, it just feels better...

Spartan's Contempo Carpet Care Program provides the highest quality products with easy-to-follow procedures. Those components insure optimum carpet appearance and rejuvenation at minimal cost.

Give your carpet the Contempo touch with Spartan's contemporary carpet care maintenance program. Guaranteed to deep clean and beautify.

Spartan offers a full assortment of spotting solutions, total carpet stain protection, general purpose and malodor counteractants plus, the latest in bio-augmentation and a first of its kind, Spartan's extraction carpet cleaner, CX3 Bio-assist...



# Contempo V®



## Extraction Cleaner for Stain Resistant Carpet

Contempo V is a concentrated extraction cleaner formulated for stain resistant nylon carpet and other extraction tasks.

Designed to conform with manufacturers' recommendations for stain resistant carpet, low-foaming, anionic detergents are the foundation of Contempo V. These anionic detergents actually increase the negative electrostatic field between soil and stain resistant carpet fibers, resulting in quick, effective removal of soil. Any remaining residue dries to a crystal and is easily vacuumed away. The stain resistant treatment remains intact. Your carpet is clean, deodorized and free of residue which contributes to rapid resoiling.

Special organic sequestering compounds in the Contempo V formula combat the adverse effects of hard water on stain resistant carpeting. Contempo V boasts a neutral pH. It does not contain anti-stats, defoamers or carpet protecting agents that may interfere with the carpet's stain resistant properties.

1

	Dilution	Oz./Gal.
Light Soil	1:128	1 oz.
Moderate Soil	1:64	2 oz.
Heavy Soil	1:40	3 oz.
Prespray and Spotting	1:12	10 oz.

## DIRECTIONS FOR USE: Extraction Method

1. Remove furniture from area to be cleaned.
2. Thoroughly dry vacuum carpeting.
3. Pre-treat traffic lanes and other heavily soiled areas using Contempo V at a 1:12 dilution (10 oz./gal. of water).
4. Clean carpet following machine manufacturer's instructions. Water temperature should not exceed 140°F.  
  
For moderate soil conditions, dilute Contempo V at a 1:64 dilution (2 oz./gal. of water). Avoid over-wetting carpet. If carpeting has been previously shampooed, Spartan Defoamer should be added to the recovery tank.
5. After cleaning, brush carpet pile in one direction with carpet pile brush or shag rake.
6. Avoid walking on carpet until thoroughly dry.
7. If furniture is replaced before carpet is dry, place protective pads under legs.
8. When carpet is completely dry, vacuum thoroughly.

## Rotary Spin Pad/Bonnet Cleaning

Vacuum carpet before cleaning. For rotary floor machines, mix 1 oz. of Contempo V (1:128). Spray on carpet at rate of 200-300 sq. ft. per gallon. Change cleaning pad frequently. For best results, extract with clear water rinse or periodically deep clean using Contempo V and extraction method as outlined above.

### NOTE:

Due to the variety of carpet materials, it is recommended that carpet be tested with Contempo V at a 1:64 dilution (2 oz./gal. of water). Using sponge or clean cloth, apply diluted Contempo V to inconspicuous area. Use of Contempo V is not recommended if test area indicates color removal or bleeding, carpet shrinkage or adhesive deterioration.

### PACKAGING:

Contempo V is available in 330-gallon reusable totes; in HDPE (High Density Polyethylene) 55, 30 and 15-gallon drums; 5-gallon pails; and gallons, four per case. Label copy is provided in English, Spanish and French. Secondary labels are also available.



## CX3 Bio-assist®



### Extraction Carpet Cleaner with a Superior Detergent System & Consume's Digestive Power

CX3 Bio-assist extraction carpet cleaner features a revolutionary, yet safe and natural approach to cleaning carpets. This product relies on a superior detergent system that rapidly penetrates and emulsifies grease, oil, and ordinary soil, facilitating easy removal through the extractor. Couple the superior detergent system with the digestive power of the Consume bacteria and the results are clearly revolutionary. These non-pathogenic microorganisms provide an environmentally sound process with which residual odors and soils are eliminated. It is nature's way of cleaning... CX3 Bio-assist utilizes low-foaming detergents that dry to a non-tacky powder. It will not contribute to carpet resoiling. Contains no optical brighteners.

One gallon of CX3 Bio-assist concentrate contains a blend of 500 billion Consume bacteria. During extraction these "critters" or microorganisms are pushed down into the carpeting where they are left behind to continue the cleaning process through digestion of residual organics that carpet extraction cannot remove.

Carpets in and around food handling areas are ideal environments for CX3 Bio-assist. Pet facilities such as kennels and veterinary clinics are the perfect climate for CX3 Bio-assist. Carpets damaged by water and flooding will also enjoy the long-term organic soil-digesting properties and odor control of CX3 Bio-assist.

CX3 Bio-assist may be used on all types of carpeting which are not harmed by water, without damaging carpet fibers or dyes. Formulated with environmental needs in mind, CX3 Bio-assist is phosphate free and biodegradable. The formulation is non-flammable and does not require special storage.

CX3 Bio-assist may be used with both hot and cold water soil extractors—direct hook-up and self-contained tank type cleaning extraction units. Recommended for use on all types of quality carpet. Temperature not to exceed 120°F.

#### **DIRECTIONS FOR USE:**

##### **Extraction Method**

1. Remove furniture from area to be cleaned.
2. Thoroughly dry vacuum carpeting.
3. Pre-treat traffic lanes and other heavily soiled areas using CX3 Bio-assist at a 1:64 dilution (2 oz./gal. of water). Stubborn stains may be treated and or removed with the Contempo Deluxe Spotting Kit, Consume, SSE Carpet PreSpray & Spotter or Spartan Carpet Stain Remover.
4. Following machine manufacturer's instructions, use CX3 Bio-assist at a 1:64 dilution (2 oz./gal. of water). Do not over-wet carpet. Previously shampooed carpet may require that Spartan's Defoamer be added to the recovery tank.
5. After cleaning, brush carpet pile in one direction with carpet pile brush or shag rake. Avoid walking on carpet until thoroughly dry.
6. If furniture is replaced before carpet is dry, place protective pads under legs.
7. When carpet is completely dry, vacuum thoroughly.

#### **NOTE:**

Due to the variety of carpet materials, it is recommended that carpet be tested with CX3 Bio-assist at a 1:64 dilution (2 oz. per gallon of water). Using sponge or clean cloth, apply diluted CX3 Bio-assist to inconspicuous area. Use of CX3 Bio-assist is not recommended if test area indicates color removal or bleeding, carpet shrinkage or adhesive deterioration.

Defoamer is a ready-to-use formula and an ideal companion product to CX3 Bio-assist. Defoamer's fast-acting silicone emulsion works in both hot and cold water systems and eliminates the problem of excess foam in recovery tanks. Defoamer may be introduced through the corrugated return hose (a major cause of foam generation) or added directly to the recovery tank.

#### **PACKAGING:**

CX3 Bio-assist is available in 330-gallon reusable totes; 275-gallon disposable totes; recyclable HDPE (High Density Polyethylene) 55, 30 and 15-gallon drums; 5-gallon pails; and gallons, four per case.

Approved by  
The WOOLSAFE  
Organisation



## Xtraction II®



### Heavy Duty Soil Extraction Carpet Cleaner

Xtraction II features a power boosting dual surfactant system for fast, effective extraction cleaning. Low foaming, unique wetting agent combination leaves no residue to contribute to resoiling. Non-corrosive, Xtraction II is safe for use in all hot or cold water extractors.

#### 3 DIRECTIONS FOR USE:

1. Remove furniture from area to be cleaned.
2. Thoroughly dry vacuum carpeting.
3. Pre-treat traffic lanes and other heavily soiled areas using Xtraction II at a 1:64 dilution (2 oz. per gallon of water) or Spartan SSE Carpet PreSpray & Spotter. Stubborn stains may be



removed with SSE Carpet PreSpray & Spotter, Consume Bacteria/Enzyme Stain Remover, Spartan Carpet Stain Remover, or use the Contempo Deluxe Spotting Kit to treat specific spotting problems.

4. Following machine manufacturer's instructions, use Xtraction II at a 1:64 dilution (2 oz. per gallon of water). Avoid overwetting carpet. If carpeting has been previously shampooed, Spartan Defoamer should be added to the recovery tank.
5. After cleaning, brush carpet pile in one direction with carpet pile brush or shag rake.
6. Avoid walking on carpet until thoroughly dry.
7. If furniture is replaced before carpet is dry, place protective pads under legs.
8. When carpet is completely dry, vacuum thoroughly.

#### NOTE:

Due to the variety of carpet materials, it is recommended that carpet be tested with Xtraction II at a 1:64 dilution (2 oz./gal. of water). Using sponge or clean cloth, apply diluted Xtraction II to inconspicuous area. Use of Xtraction II is not recommended if test area indicates color removal or bleeding, carpet shrinkage or adhesive deterioration. Phosphate free Biodegradable

#### PACKAGING:

Xtraction II is available in 330-gallon reusable totes; recyclable HDPE (High Density Polyethylene) 55, 30 and 15-gallon drums; 5-gallon pails; and gallons, four per case. Label copy is provided in English, Spanish and French. Secondary labels are also available.

## Plus 5®



### High Foaming, Heavy Duty Liquid Carpet Shampoo for Rotary and Dry Foam Equipment

Plus 5 is a combination of high foaming, synthetic wetting and drying agents, inorganic builders, buffers, and solvents. Designed for extremely heavy duty shampooing tasks, Plus 5's fast acting detergent complex penetrates and emulsifies grease, oil and ordinary soil. Anti-static benefits are achieved through the careful and controlled selection of raw materials. This heavy duty carpet shampoo may be used as a wet or dry type shampoo depending upon dilution and equipment.

4

#### DIRECTIONS FOR USE:

1. Remove furniture from area to be shampooed.
2. Thoroughly dry vacuum the entire area.
3. Following directions, dilute Plus 5 with lukewarm water.
4. Prescrub hard-to-reach areas using a brush and diluted Plus 5.

#### Dry Foam Machines

1. For normal soil conditions, dilute one part Plus 5 to 10 parts water (13 oz. per gal. of water).
2. A 1:8 dilution is recommended for greasy or heavily-soiled areas (16 oz. per gal. of water).
3. Shampoo in one pass of the machine, first in one direction and then back, overlapping about two inches.
4. A second pass may be necessary if the carpet is heavily soiled.

#### Rotary Machines

1. For normal soil conditions, dilute one part Plus 5 to 16 parts water (8 oz. per gal. of water).
2. A 1:12 dilution is recommended for

greasy or heavily-soiled areas (10 oz. per gal. of water).

3. Shampoo across carpet, overlapping passes.
4. Double scrub heavily-soiled areas, but do not release more shampoo.
5. Avoid over-wetting carpet.

#### NOTE:

1. For maximum appearance and fast drying, use wet-dry vacuum to remove foam and set pile.
2. An extractor unit may be used with clear water to thoroughly remove excess foam and set pile.
3. Brush carpet pile in one direction with carpet pile brush.
4. Avoid walking on carpet until thoroughly dry.
5. If furniture is replaced before carpet is dry, place clear plastic pads under legs.
6. When carpet is dry, vacuum thoroughly.

#### PACKAGING:

Plus 5 is available in 330-gallon reuseable totes; in HDPE (High Density Polyethylene) 55, 30 and 15-gallon drums; 5-gallon pails and gallons, four per case. Label copy is provided in English, Spanish and French. Secondary labels are also available.



# Contempo Stat®



## Carpet Sanitizer

Contempo Stat is a low foaming carpet shampoo formulated for use with extraction and carpet steam cleaning equipment. Contempo Stat contains "twin chain"

quaternary ammonium compounds to reduce and control the growth of odor causing bacteria.

Fortified with odor counteractants to neutralize unpleasant malodors. Optimized for use on commercial washable synthetic fibers, but not recommended for use on wool carpets. Contempo Stat effectively and economically lifts and removes greasy soil, resists resoiling and utilizes "built-in" defoamers for more productive use.

5

### DIRECTIONS FOR USE: To Clean, Sanitize and Deodorize Carpets Carpet Spotting

1. Blot up any excess liquid with a clean, white absorbent cloth.
2. Spray Contempo Stat directly onto spot or stain.
3. Gently agitate with a clean cloth or brush.
4. Add water to soiled area using a clean sponge or spray bottle.
5. Blot with clean, white absorbent cloth or use a wet vac.
6. Repeat as necessary.

## Steam Extraction

Vacuum carpet thoroughly. Mix 2 oz. (1:64) of Contempo Stat per gallon of water. Inject and extract as you would any steam cleaning shampoo.

## Spin Bonnet (Bonnet Buff) Cleaning

Vacuum carpet thoroughly. Mix 4 oz. (1:32) of Contempo Stat per gallon of water. Spray on carpet at rate of 200-300 sq. ft. per gallon. (Alternate direction).

## Heavy Duty Spin Bonnet (Bonnet Buff) Cleaning

Vacuum carpet thoroughly. Mix 16 oz. (1:8) of Contempo Stat per gallon of water. Spray on carpet at rate of 200-300 sq. ft. per gallon.

### NOTE:

Test color fastness of carpet before use. Apply diluted cleaner to a small concealed spot, then rub with clean white cloth. If color transfers to cloth or changes, a water based product should not be used.

Not recommended for use on stain-resistant nylon carpets. Consult carpet manufacturer's warranty and maintenance instructions for proper use.

After cleaning, set carpet pile in one direction with a stiff brush. Place aluminum foil under legs of furniture while carpet is drying. Over-wetting can cause shrinking of carpet. Manufacturer assumes no responsibility for over-wetting or misuse.

### Active Ingredients:

Octyl decyl dimethyl ammonium chloride ..... 0.60%  
 Dioctyl dimethyl ammonium chloride ..... 0.24%  
 Didecyl dimethyl ammonium chloride ..... 0.36%  
 Alkyl (C<sub>14</sub> - 50%, C<sub>12</sub> - 40%, C<sub>16</sub> - 10%) dimethyl benzyl ammonium chlorides ..... 0.80%

**Inert Ingredients:** ..... 98.00%

EPA Reg. No. 6836-108-5741  
 EPA Est. No. 5741-OH-1

### PACKAGING:

Contempo Stat is available in recyclable HDPE (High Density Polyethylene) 5-gallon pails; and gallons, four per case. In compliance with EPA regulations, each gallon is equipped with an approved child resistant closure. Label copy is provided in English and Spanish.



# Bonnet and Traffic Lane Carpet Cleaner



Spartan Bonnet and Traffic Lane Carpet Cleaner is an emulsion concentrate formulated to provide the quick solvent cleaning action, fast dry

time and deodorizing freshness desired when the bonnet method of carpet care is used.

A blend of dry and wet solvents, Bonnet and Traffic Lane Carpet Cleaner transfers soils from carpet to bonnet surface quickly. No soapy, sticky or tacky residue remains in carpet to contribute to resoiling.

6

Fast drying, Bonnet and Traffic Lane Carpet Cleaner quickly gives carpets a "just shampooed" look. An excellent choice for high-traffic lane cleaning. No special equipment is needed.

## **DIRECTIONS FOR USE:**

### **Shake Well Before Using.**

**NOTE:** For best results, thoroughly vacuum carpet before cleaning.

### **Recommended Dilutions**

Light Cleaning 1:8

Normal Soil Conditions 1:6

Heavy Cleaning/Renovation 1:3

### **Machine Cleaning Large Areas**

1. Mix solution in Spartasprayer or other pump up/pressure sprayer type applicator.

2. Pretreat traffic lanes, spots and stains with Bonnet and Traffic Lane Carpet Cleaner. Pretreat dry bonnet pads and proceed with general carpet cleaning as follows.
3. Section carpet into 6' x 12' areas. Holding nozzle 16" to 20" from carpet, apply Bonnet and Traffic Lane Carpet Cleaner in 6' widths. Spray under desks and furniture.
4. For light soil, scrub immediately after spraying. For heavy soil, wait 10 minutes. Turn and change bonnet pads frequently.

### **Immersion Method**

1. Shake well before using.
2. Immerse bonnet in diluted solution. Wring out and place pad on machine.
3. Turn and change bonnet pad frequently.

### **Traffic Lane Cleaning**

1. Spartan Bonnet and Traffic Lane Carpet Cleaner is recommended for "quick cleaning" heavily trafficked areas.
2. Pretreat traffic lanes and other heavily soiled areas of carpeting with Spartan Bonnet and Traffic Lane Carpet Cleaner prior to shampooing or extracting

Phosphate free  
Biodegradable

### **PACKAGING:**

Spartan Bonnet and Traffic Lane Carpet Cleaner is available in gallons, four per case. Label copy is provided in English and Spanish. Secondary labels are also available.





# SSE Carpet PreSpray Contempo® H<sub>2</sub>O<sub>2</sub> & Spotter®



SSE Carpet PreSpray & Spotter, a unique blend of solvents and crystallizing detergents, provides optimum carpet maintenance at minimal cost.

Use with Spartan's innovative Spray and Extract carpet cleaning technique; for pretreating traffic lanes prior to shampooing or extraction; for bonnet cleaning; as a general purpose spotter or pre-oil break treatment. Pleasant citrus fragrance. Ready-to-use.

## **DIRECTIONS FOR USE:** **Spray and Extract Method**

**7**

1. Apply SSE Carpet PreSpray & Spotter through a pump-up or pressure sprayer type applicator.
2. Let set 15 minutes.
3. Extract with clear water.
4. When carpet is completely dry, vacuum thoroughly.

## **Rotary Spin Pad/Bonnet: Spray Method**

Apply SSE Carpet PreSpray & Spotter in 6' widths. Pretreat dry bonnet pads and bonnet clean carpet. Turn and change bonnet or spin yarn pads frequently.

## **Immersion Method**

Immerse bonnet in solution. Wring out and place bonnet or spin yarn pad on machine. Bonnet clean carpet.

## **Pretreating Traffic Lanes and Other Heavily Soiled Areas**

Apply through pump-up or pressure sprayer type applicator prior to shampooing or extracting.

## **Carpet Spotting**

1. Blot up any excess liquid with a clean, white absorbent cloth.
2. Spray SSE Carpet PreSpray & Spotter directly onto spot or stain.
3. Gently agitate with a clean cloth or brush.
4. Add water to soiled area using a clean sponge or spray bottle.
5. Blot with clean, white absorbent cloth or use a wet vac.
6. Repeat as necessary.

## **PACKAGING:**

SSE is available in recyclable HDPE (High Density Polyethylene) 5-gallon pails; gallons, 4 per case; and RTU Handi Spray® quarts, 12 per case. Label copy is provided in English and Spanish. Secondary labels are also available.



Contempo H<sub>2</sub>O<sub>2</sub> Spotting Solution is a convenient, ready-to-use, hydrogen peroxide based carpet spotting solution and pre-spray treatment. The clear colorless solution has a fresh crystal water fragrance.

On-the-spot cleaning action combined with unique effervescent bubbling action easily removes most organic spotting problems. This hydrogen peroxide based product cleans away many of the most dreaded food stains: red wine, red sauces, mustard, grape juice, coffee, tea, food grade red dye, and chocolate. Contempo H<sub>2</sub>O<sub>2</sub> is also effective against most cooking oils and greases, even motor oil! The incorporation of hydrogen peroxide in Contempo H<sub>2</sub>O<sub>2</sub> Spotting Solution provides the unique ability to oxidize odors from spots caused by pet soils, vomit, and spoiled milk.

This advanced cleaning formula is designed with ingredients that penetrate, lift and oxidize stains. These powerful detergents dry to a brittle powder, leaving no tacky residue. The brittle powder will not contribute to re-soiling and is easily removed by vacuuming.

## **DIRECTIONS FOR USE:**

Before use, always pre-test the product on an inconspicuous area to test for colorfastness, bleaching or shrinkage.

## **Spotting/Stain Removal**

1. Remove excess matter and blot up excess moisture with a clean, white, absorbent cloth.
2. Spray Contempo H<sub>2</sub>O<sub>2</sub> Spotting Solution directly on the spot and wait a few seconds to allow the product time to penetrate.
3. Gentle agitation may be needed. Use a carpet taping knife or soft carpet brush to penetrate the carpet pile, working the cleaning solution into the affected area.
4. Spray a small amount of water on the area to float the spot up and out of the carpet pile.
5. Blot with a clean, white, absorbent towel. Frequently turn the towel and apply a clean area of the cloth to the carpet until the spot is lifted. Extraction is recommended if available.
6. If the stain is set deeply into the pile, repeated applications may be necessary and longer dwell time may be needed for the product to lift away stains.

Since liquids will spread as they penetrate the nap, spray a surface area twice as large as the stain. Use of a wet-vac pick-up will help speed the drying process.

Vigilant attention to spots can extend the time between all-over carpet cleanings.

## **Pre-Spray Extract Method**

1. Apply Contempo H<sub>2</sub>O<sub>2</sub> Spotting Solution directly from the product container or through a pump-up or pressure type applicator prior to shampooing or extracting. Do not dilute. (Spartan Defoamer may be needed in the recovery tank.)
2. Let set 15 minutes.
3. Extract with clear water.
4. When carpet is completely dry, vacuum thoroughly.

## **Pre-Treating Traffic Lanes and Other Heavily Soiled Areas**

Apply directly to carpet from the product container or through a pump-up or pressure type applicator prior to shampooing or extracting. Do not dilute. Allow product to sit and penetrate the carpet pile. Shampoo or extract as usual.

## **PACKAGING:**

Contempo H<sub>2</sub>O<sub>2</sub> Spotting Solution is available in and gallons, four per case; and RTU Handi Spray® quarts, 12 per case. Each case of quart containers includes three trigger sprayers. Label copy is provided in English, Spanish and French.





## Contempo Deluxe Spotting Kit



The Contempo Deluxe Spotting Kit addresses the most common spotting obstacles encountered when cleaning carpet... Coffee & Tea; Paint, Oil, Grease, Tar & Ink; Red Dye; Rust; Pet & Foul Odors and

Protein spots are all included in Spartan's Contempo Deluxe Spotting Kit... Solutions that specialize in spot removal.

The all inclusive deluxe spotting kit is self contained in an easy to carry travel case. The kit comes complete with tamping brush/scrapper, towel, sponge and stain removal guide for easy "how to" and "what spotter" to use reference guide. Everything needed to address the spot at hand is contained in this portable kit.

### Specialized Spotting Solutions: COFFEE & TEA SOLUTION

quickly loosens and removes stubborn coffee and tea type stains. The colorless liquid solution has a fresh mint fragrance.

#### DIRECTIONS FOR USE:

Apply with sprayer or sponge to soiled area of carpet or upholstery. Agitate with tamping brush. Let sit for 2 minutes. Extract or rinse with clear water. Repeat if needed. May be used as a pre-spray spotter or in a steam release method.

### PAINT, OIL, GREASE, TAR & INK SOLUTION

removes paint, oil, grease, tar & ink from carpets by dissolving and holding the spot in suspension until the soil is flushed out with water. The clear, pale yellow solution has very low odor.

#### DIRECTIONS FOR USE:

Apply with sprayer or sponge. Do not oversaturate. Allow solution to sit for 5 minutes before removing. Flush, rinse with water or extract.

### RED DYE SOLUTION

is a dye remover that attacks food dye spots that cannot be removed with conventional cleaners. Treat grape juice, wine spots, cola and caramel color spots with Red Dye Solution. This clear colorless liquid has a fresh lemon fragrance.

#### DIRECTIONS FOR USE:

For use only when all other spotting solutions have failed. Read product label thoroughly. Directions must be followed exactly to avoid unwanted color loss or damage.

A steam iron and good quality paper towels or thin white cotton towels are needed. Have these items on hand prior to applying Contempo Red Dye Solution.

1. Apply Contempo Red Dye Solution liberally onto the spot. Work into spot with brush.
2. Place a wet towel (cotton or paper) over the spot.
3. Fill steam iron with water. Preheat to high or a hot cotton setting.



4. Place steam iron on towel, apply steam over spot for approximately 20 seconds. Shift and rotate towel each time iron is applied. Be sure to use a clean section of the towel. Keep towel wet with water and the spot wet with Contempo Red Dye Solution. After 3 or 4 applications, water and product will need to be reapplied.

5. Once spot is removed, rinse and extract.

**RUST SOLUTION**

quickly dissolves rust spots in seconds. This fast, effective opaque gel penetrates the spot, not the carpet backing. Safe for most carpets and fabrics.

**DIRECTIONS FOR USE:**

Shake solution well. Apply to rust spot, allow solution to sit on the rust spot until it disappears. Rinse with water or extract.

**PET & FOUL ODOR SOLUTION**

works well on stubborn urine odor, water and fire damage odors plus stubborn mold and mildew odors. A great general purpose deodorizing agent, Pet & Foul Odor Solution deodorizes without heavy chemical odor. Fresh, clean scent and neutral pH for safe non-aggressive deodorization.

**DIRECTIONS FOR USE:**

Use a non-atomizing sprayer/tip for application.

**Hard Surface, General Spraying** Mix 8 ounces per gallon of water.

**Carpet Pre-spray, Truck-mount Slurry and Clean Water Restoration** Mix 16 ounces per gallon of water, apply, wait 10 minutes and extract.

**Water and Fire Damage & Unsanitary Water Restoration** Mix 32 ounces per gallon of water, apply, wait 10 minutes and extract.

**Portable Extractors** Add 1 or 2 ounces to solution tank.

**PROTEIN SOLUTION**

is designed specifically for greasy protein type stains. A unique combination of powdered detergents, emulsifiers and enzymes dissolves body oil, food residue, milk, grass and blood stains. Very useful in and around kitchen areas, busy traffic lanes and upholstered furniture. A fresh lemon fragrance leaves carpeting and upholstery with a clean scent.

**Directions for Use** Mix 2 to 4 oz. with a gallon of warm water, apply and let stand for 20 minutes. Extract or wipe with a sponge. Optimum performance is achieved when extracted at 140°F or wipe up with a hot white cloth.

**Specification Data**

See individual spotting solution labels and MSDS for further product information.

**PACKAGING:**

The Contempo Deluxe Spotting Kit is self contained in a sturdy hard plastic type tackle-box. All six spotting solutions are in 16 oz plastic bottles. Spanish copy is available. Refills: Contempo Deluxe Spotting Kit refills are available, per solution, twelve 16 oz plastic bottles per case.

## Chewing Gum Remover



Chewing Gum Remover Instantly freezes chewing gum, candle wax and other sticky, gummy substances for easy removal with putty knife or scraper. Leaves

no residue. Features directional spray actuator to directly apply product and minimize the possibility of skin contact.

### DIRECTIONS FOR USE:

Some individuals may be sensitive to ingredients in this product. Before use, read product labeled MSD sheet. If questions remain, consult your employer or physician.

1. Remove as much gum residue as possible with a scraper or dull knife.
2. Point nozzle at 45° angle. Using short, quick bursts, spray until gummy substance is frozen solid.
3. Chip or scrape off frozen matter using a putty knife, dull knife or scraper.

### PACKAGING:

Spartan Chewing Gum Remover is packaged in 12 oz. aerosol cans, (net 6.5 oz.) 12 per case.

## Carpet Stain Remover



Spartan Aerosol Carpet Stain Remover is a combination of wetting agents and solvents providing a rapid and effective method for

removal of the vast majority of commonly experienced stains such as coffee, cola, ink, lipstick, shoe polish, merthiolate, grease and pet stains. Effective on water soluble and oil soluble stains, Carpet Stain Remover's prompt results provide substantial time and labor savings.

### DIRECTIONS FOR USE:

1. On wet stains, blot up any excess liquid with clean, white absorbent cloth.
2. Hold can at 45° angle and apply a uniform layer of foam to stain.
3. Gently agitate, using a clean cloth.
4. Add water to stained area – a clean sponge or spray bottle is recommended.
5. Blot area with clean, white, absorbent cloth, or use a wet vacuum.
6. For extremely stubborn stains, repeat steps 2 through 5.

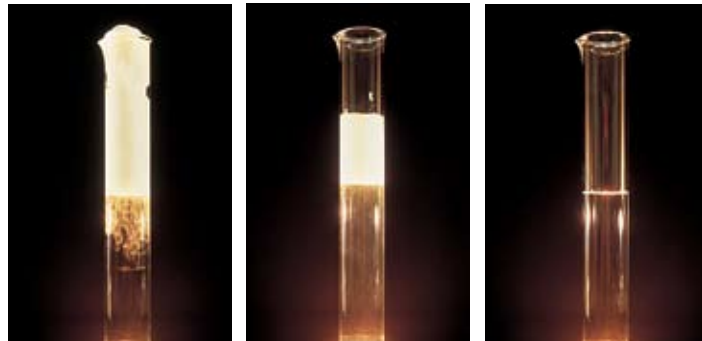
### Prespotting Prior to Shampooing

1. Spray Carpet Stain Remover on soiled area 10 to 15 minutes prior to shampooing.
2. With clean, white absorbent cloth, blot soiled area, removing as much of the stain as possible.
3. Re-spray prior to shampooing.

### PACKAGING:

Spartan Carpet Stain Remover is available in 20 oz. aerosol cans, (net 18 oz.) 12 per case.

## Defoamer™



Spartan Defoamer is a stable white emulsion formulated to quickly eliminate foam in recovery tanks of hot and cold water soil extractors, automatic shampooing equipment and floor scrubbers. A time and labor saver, Defoamer assists efficient recovery and continuous equipment use. Non-corrosive. Will not harm equipment. Phosphate free.

### DIRECTIONS FOR USE:

1. Shake well before using.
2. USE FULL STRENGTH.
3. Add 1 oz. Spartan Defoamer per each 5 gallons of recovery tank or sink capacity for elimination of normal foam condition.
4. When carpeting has undergone previous and repeated shampooing, for maximum efficiency spray Spartan Defoamer into recovery hose and onto sides of recovery tank prior to extraction.
5. When foam is excessive, spray Spartan Defoamer directly onto foam in recovery tank as needed.

### PACKAGING:

Spartan Defoamer is available in gallons, four per case and quarts, 12 per case. Each quart is equipped with a flip-top dispensing cap. Label copy is provided in English, Spanish and French. Secondary labels are also available.



## Airlift®



### General Purpose Deodorant Concentrate Malodor Counteractant

Airlift is a water soluble deodorant

concentrate featuring an odor eliminator to effectively combat malodors caused by smoke, mildew, urine and vomit.

Specially effective as a carpet deodorizer, add Airlift to diluted shampoo or extraction solution. Spritz Airlift into air after carpet cleaning for added freshness! Available in several pleasant fragrances... lemon, fresh scent, tropical and Airlift® Smoke & Odor Eliminator.

### DIRECTIONS FOR USE: Carpeting

Add 1/2 oz. of Airlift (1:256) to each gallon of diluted shampoo or extraction solution.

### Hand Spraying/Misting

Add 4 oz. of Airlift per gallon of water (1:32).

Contains biodegradable surfactants. Phosphate free

### PACKAGING:

Airlift is available in recyclable HDPE (High Density Polyethylene) 55-gallon drums, 5-gallon pails and gallons, four per case. Also available in ready-to-use RTU Handi Spray quarts, 12 per case and 20 oz. aerosol cans (net 16 oz.) 12 per case. Secondary labels are also available.



## Contempo Tannin Browning Treatment



### Post Spray Application for Browning and Yellowing Neutralizes Alkali Residue

Contempo Tannin Browning Treatment is a mild acidic post spray application that safely removes browning, yellowing, water spots from over-wetting and most tannin spots. It is also an effective neutralizer for alkali residue.

### Remove Wicking Effects, Yellowing and Browning

Yellowed or browned carpet is usually the result of long periods of drying, due to the carpet fibers being over saturated with water and detergents. The carpet backing is actually "wicking" from the base of the carpet construction to the tip of the fiber which, when dried, will appear yellow or brown.

### Neutralizing Carpet Fibers

Most carpet cleaners like degreasers have a pH level in the range of 8.0 – 12.5 and due to the alkalinity, certain carpet construction and fibers can react to the alkaline product leaving an undesirable cast or shade to the carpet. This happens frequently with natural cottons and wool carpets. Solving this can be accomplished by a post spray application with Contempo Tannin Browning Treatment. This treatment will lower the overall pH of the carpet fiber to neutral or slightly acidic conditions representative of typical pH levels of new carpeting.

### Colorless and No Residual Odor

Contempo Tannin Browning Treatment leaves carpet soft and pliable. No residual odor to offend or conflict with other fragrances. An all-in-one application process, for neutralizing carpet and correcting yellowing and browning.

### DIRECTION FOR USE:

Some individuals may be sensitive to ingredients in this product. Before use, read product label and MSD sheet. If questions remain, consult your employer or a physician.

### Minimize Service Calls and Repairs Due to Clogged Extractor Jets & Pumps

Contempo Tannin Browning Treatment eliminates clogged jets or pumps on extraction machines. After each use, fill extractor equipment with Contempo Tannin Browning Treatment and let the product solution run through the machine to eliminate any detergent and hard water and mineral build up in the tanks, pumps and jets.

### Post Spray Application for Browning and Yellowing

Add 16 ounces of product to 1 gallon of water and dispense through a portable or truck mount extractor or prespray entire carpet. Extract the applied solution out of the carpet — then allow the carpet to dry by using fans and plenty of air circulation. If the carpet appears yellow after first application, a second extraction using the above procedure can be followed or, the carpet can be sprayed and rinsed with a bonnet pad.

### To Stabilize Dyes

Add 4-6 ounces of Contempo Tannin Browning Treatment to one gallon of water and apply through an extraction machine or Spartasprayer. Rinse carpet with hot or cold water. Also, the carpet can be sprayed with a pump/pressure sprayer and rinsed with a bonnet pad.

### To Neutralize Alkali Residue

As a post rinse aid to neutralize an alkaline extraction residue, Contempo Tannin Browning Treatment should be diluted at 2 ounces per gallon of water. Using the product will result in a softer feeling and brighter looking carpet. The result will be carpet restored to approximately the original pH from manufacturing.

### PACKAGING:

Contempo Tannin Browning Treatment is available in recyclable HDPE 5-gallon pails; and gallons, four per case. Label copy is provided in English and Spanish. Secondary labels are also available.

# Spartagard®

## Total Carpet Protection and Anti-Stat

Spartagard protects carpet against soil or oil penetration. Unseen to the observer, Spartagard provides the added benefits of carpet nap and backing protection. This reduces wear, prolongs carpet life and speeds the cleaning task since soil is held on the surface for easy removal through vacuuming, light shampooing or extraction.

Proper use of Spartagard provides a 50% reduction in carpet maintenance under normal traffic conditions.

Non-combustible.

### DIRECTIONS FOR USE:

Some individuals may be sensitive to ingredients in this product. Before use, read product label and MSD sheet. If questions remain, consult your employer or a physician.

### Closed or level looped type carpet (commercial grade)

1. Mix 21 oz. Spartagard to one gal. of tap water (1:6).
2. While holding the spray nozzle 12 inches from carpet, apply diluted Spartagard in even, overlapping strokes at the rate of 1 gal. per 200 sq. ft.
3. Reapplication: Mix as above and apply at the rate of 1/2 gal. per 200 sq. ft.

### Plush, cut pile, shag type carpeting

1. Mix 32 oz. Spartagard to 1 gal. of tap water (1:4) to obtain 1-1/4 gals. diluted Spartagard.
2. While holding the spray nozzle 12 inches from carpet, apply diluted Spartagard in even, overlapping strokes at the rate of 1 gal. per 200 sq. ft.
3. Reapplication: Mix as above and apply at the rate of 1/2 gal. per 200 sq. ft.

### IMPORTANT:

1. Spartagard may be applied to either damp or dry color fast carpeting. If not new, carpet must be extracted clean and free of detergent residue.
2. For easy, uniform application, the use of commercially available spray equipment (tank type) is



recommended. Thoroughly rinse spray equipment after use.

3. To insure uniform coverage, section carpet to correspond with area that can be treated with diluted Spartagard in applicator.
4. Avoid over wetting of carpet.
5. To test uniformity of treatment, place a few drops of water on several areas of treated, all-dried carpet. If droplets do not remain on carpet surface for one-half minute, further treatment to prevent differential soiling or wear is essential.

### NOTE:

For maximum efficiency and maintenance of carpeting treated with Spartagard:

1. Frequently vacuum carpet.
2. Blot up wet spots and spills as they occur using clean absorbent cloth.
3. Rinse and blot dry. Use a Spartan carpet stain remover or spotter if needed.
4. Use a Spartan carpet cleaner when carpeting eventually becomes soiled or is no longer water and oil repellent. Spartagard should be reapplied in accordance with reapplication recommendations.

### PACKAGING:

Spartagard is available in recyclable HDPE (High Density Polyethylene) gallons, four per case. Label copy is provided in English and Spanish. Secondary labels are also available.

12



## Consume®



### Bacteria/Enzyme Odor Eliminator Stain Remover and Drain Opener

Eliminates foul odors caused by urine, feces, blood, vomit, food spills,

garbage and grease; removes blood, urine and other difficult stains from carpet; deodorizes clogged drains... keeps them open; assists the efficient operation of grease traps. Consume contains non-pathogenic enzyme producing bacteria which quickly eat away and destroy the source of odor. Unique vanilla fragrance enhances odor killing enzyme action. Certified salmonella free. Environmentally safe, Consume is biodegradable, phosphate free, non-toxic and non-polluting. User friendly, Consume contains no acids, butyls or solvents. Safe to use on all washable surfaces, Consume is the natural solution to many maintenance problems.

#### DIRECTIONS FOR USE:

**Important: Do not use with hot water, bleach, disinfectants or chemical drain openers as these will reduce product performance.**

#### Carpet Odor and Stain Remover

Remove solid waste. Depending on soil conditions, dilute Consume 1:10 to 1:20 (12 oz. to 6 oz./gal. warm water).

Caution: May stain light-colored carpeting. Test in an inconspicuous area for colorfastness before applying product. Apply liberally to soiled area and brush or rub in well. Rinse thoroughly with water and extract.

**Odor Control (Restrooms, Dumpsters, Kennels, Health Care, Restaurants, Schools, Prisons): DO NOT SPRAY INTO AIR OR USE AS AN AIR FRESHENER.**

#### Remove Solid Waste

Dilute 1:1 to 1:10 (128 oz. to 12 oz. gal. warm water) and apply with trigger sprayer, sponge, or cloth. Consume must contact the surface to be effective.

### Extremely Heavy Stains

Dilute Consume 1:10 to 1:20 (12 oz. to 6 oz./gal. warm water) and apply to stain. Brush or rub in well. Cover with plastic for 24 hours to prevent evaporation. Rinse thoroughly with water and extract.

Contains over 200 billion microorganisms per gallon Certified Salmonella free Biodegradable and Phosphate free

#### PACKAGING:

Consume is available in 330-gallon reusable totes; recyclable HDPE (High Density Polyethylene) 55, 30 and 15 gallon drums; 5-gallon pails; gallons, four per case and RTU Handi Spray® quarts, 12 per case.

## Carpet Refresher



### Carpet Refresher

A white, fragrant, mousse-like-foam, aerosol carpet refresher.

It only takes five-minutes to freshen carpets with

Contempo Carpet Refresher.

Everyday odors, smoke, pets, cooking and musty stale odors can become trapped in carpet fibers and make it smell foul and unpleasant. Simply spray the mousse-like-foam onto the carpet and allow it to dry for five minutes. No vacuuming needed. Refreshing with Contempo Carpet Refresher is almost effortless to use. The spring shower fragrance sends the message of clean.

#### DIRECTIONS FOR USE:

1. Shake can well before using and periodically throughout the application process.
2. Hold can at a 45° angle. Press actuator tab being sure not to cover dispensing hole with finger.
3. Spray the quick-drying foam onto carpet in a back and forth motion.
4. The foam begins working as it disappears into your carpet. In about five minutes, carpet is dry and refreshed.

5. Do not walk on damp carpets with soiled shoes as dirt transfer may occur. Do not over-spray onto marble, tile, brass, plastic or any hard surface as damage may result. Spray only fabrics that are colorfast and can be safely cleaned with water and mild detergents.

#### NOTE:

Carpets should be professionally cleaned on a periodic basis.

#### PACKAGING:

Contempo Carpet Refresher is packaged in 20 oz. aerosol cans, (net 17 oz.), 12 per case.

# Spot & Stain Solution Product Guideline Chart

Type of Stain	Contempo V	CX3 Bio-Assist	Xtraction II	Plus 5	Contempo Stat	Bonnet & Traffic Lane Cleaner	SSE Carpet Prespray & Spotter	H <sub>2</sub> O <sub>2</sub> Spotting Solution	Aerosol Carpet Stain Remover	Contempo Deluxe Spotting Kit	Contempo Tannin Browning Treatment	Chewing Gum Remover	Consume	Airlift	Carpet Refresher
adhesive										•					
ball point pen								•		•					
baby formula		•						•		•					
beer	•	•	•	•	•	•	•	•	•	•	•		•		
browning								•		•					
blood (wet)	•	•	•	•	•		•	•	•	•					
butter		•						•		•					
carbon black								•		•					
catsup		•						•		•					
chewing gum												•			
chocolate	•	•	•	•	•		•	•	•	•					
coffee	•		•	•	•	•	•	•	•	•	•		•		
cola		•						•		•					
cooking oil	•	•	•	•	•	•	•	•	•	•			•		
dairy		•						•		•					
egg		•								•					
food soils (oily)	•	•	•	•	•	•	•	•	•	•			•		
food soils (non-oily)	•	•	•	•	•		•	•	•	•					
fruit juices	•	•	•	•	•		•	•	•	•					
glue (water-based)	•		•	•	•		•	•	•	•					
glue (solvent-based)								•	•	•					
grease, oil	•		•	•	•	•	•	•	•	•					
inks (water-based)	•		•	•	•		•	•	•	•					
inks (solvent-based)								•	•	•					
iodine										•					
lipstick										•					
liquor	•	•	•	•	•	•	•	•	•	•					
marking pen										•					
mustard		•					•	•	•	•					
nail polish										•					
foul odors		•			•			•					•	•	•
paint (oil-based)										•					
paint (water-based)										•					
red sauce								•		•					
perfume	•	•	•	•	•		•	•	•	•					
salad dressing	•	•	•	•	•		•	•	•	•			•		
shoe polish							•		•	•					
soft drinks		•						•		•			•		
tea	•		•	•	•	•	•	•	•	•	•				
urine	•	•	•	•	•		•	•	•	•			•	•	•
vomit	•	•	•	•	•	•	•	•	•	•			•	•	•
wine								•	•	•					

## General spotting and stain removal procedures

1. Always remove or blot excess liquids or solids.
2. Be sure to read all Directions, Precautionary and First Aid Statements on product labels before use of these or any Spartan product.

**Important:** The above Spot and Stain Procedures are strictly recommendations. NO guarantee of success is expressed or implied and Spartan Chemical Company, Inc. assumes no liability.

Stain Resistant Carpet: Use of products other than Contempo V may void warranty for stain resistant carpeting.

Be sure to read all Directions, Precautionary and First Aid Statements on product labels before use of these or any Spartan product. Material Safety Data Sheets for all Spartan products are available from your authorized Spartan Distributor or by visiting [www.spartanchemical.com](http://www.spartanchemical.com).

**Guarantee:** Spartan's modern manufacturing and laboratory control insure uniform quality. If dissatisfied with performance of product, any unused portion may be returned for credit within one year of the date of manufacture. Use product as directed and read all precautionary statements.

Distributed by:



**Spartan Chemical Company, Inc.**  
1110 Spartan Drive, Maumee, Ohio 43537  
1-800-537-8990  
[www.spartanchemical.com](http://www.spartanchemical.com)

