



# THE SAFETY ZONE

For over 40 years, The Safety Zone has been partnering with our clients to ensure their successes. Our experience supplying the industrial safety, janitorial, food service, food processing and medical markets extends worldwide. We'll customize our services to fit your objectives, adding valued insight that, in combination with our comprehensive selection of superior PPE products, will enhance your sales. From a one case order to a full container or truckload, we have the ability to meet and exceed all of your PPE needs.



the SAFETY  
ZONE®



### WORLDWIDE HEADQUARTERS

Guilford, CT



### NORTH AMERICAN DISTRIBUTION CENTERS

Richmond, IN

Cerritos, CA

Houston, TX

Pompano Beach, FL

Kent, WA

Thomasville, NC

Fergus, ON Canada



### INTERNATIONAL LOCATIONS

China

Malaysia

Thailand



# LATEX GLOVES

 COLOR OPTIONS

GRDR-(SIZE)-1-T	4.5 MIL, Powdered Latex, 100/BX 10BX/CS SM-XL
GRPR-(SIZE)-1-T	5.0 MIL, Powder Free Latex, 100/BX 10BX/CS SM-2X
GRDL-(SIZE)-1	4.5 MIL, Blue Powdered Latex, 100/BX 10BX/CS, SM-XL
GRPL-(SIZE)-1	4.5 MIL, Blue Powder Free Latex, 100/BX 10BX/CS, SM-XL
GRPR-(SIZE)-1-T8	8.0 MIL, Powder Free Latex, Double Chlorinated, 100/BX 10BX/CS, SM-XL
GRHL-(SIZE)-5M-P	13.0 MIL, 12" Blue Powder Free Latex, Double Chlorinated, 50/BX 10BX/CS, SM-2X
GRHP-(SIZE)-5M	13.0 MIL, 12" Powder Free Latex, 50/BX 10BX/CS, SM-XL

## MEDICAL GRADE

GRER-(SIZE)-1	4.5 MIL, Powdered Latex, Examination, 100/BX 10BX/CS SM-XL
GREP-(SIZE)-1	4.5 MIL, Powder Free Latex, Examination, 100/BX 10BX/CS SM-XL
GREP-(SIZE)-1T	5.5 MIL, Premium Powder Free Polymer Coated Latex, Examination, 100/BX 10BX/CS, SM-XL
GREH-(SIZE)-5M	10.0 MIL, 12" High Risk Polymer Coated Powder Free Latex, Examination, 50/BX 10BX/CS, SM-XL
GREL-(SIZE)-5M-P	13.0 MIL, 12" Blue High Risk Powder Free Latex, Examination, 50/BX 10BX/CS, SM-2X

ALL SAFETY ZONE GLOVES COMPLY WITH THE FFDCA FOR FOOD CONTACT AND ARE DEHP FREE

NATURAL LATEX



BLUE LATEX



HEAVY DUTY LATEX



# NITRILE GLOVES

 COLOR OPTIONS

GNPR-(SIZE)-1A	3.0 MIL, Blue Powder Free Nitrile, 100/BX 10BX/CS, SM-XL
GNPR-(SIZE)-2	3.0 MIL, Blue Powder Free Nitrile, 200/BX 10BX/CS, SM-2X
GNPR-(SIZE)-BK	3.3 MIL, Black Powder Free Nitrile, 100/BX 10BX/CS, SM-XL
GNPR-(SIZE)-1E	3.5 MIL, Blue Powder Free Nitrile, 100/BX 10BX/CS, SM-XL
GNPR-(SIZE)-1M	3.7 MIL, Blue Powder Free Nitrile, 100/BX 10BX/CS, SM-2X
GNPR-(SIZE)-1-K	5.3 MIL, Black Powder Free Nitrile, 100/BX 10BX/CS, SM-2X
GNPR-(SIZE)-1M-SZR	3.0 MIL, Indigo Powder Free Nitrile, 100/BX 10BX/CS, SM-2X
GNPR-(SIZE)-1	6.0 MIL, Blue Powder Free Nitrile, 100/BX 10BX/CS, SM-2X
GNPL-(SIZE)-5-T8	8.3 MIL, 12" Blue Powder Free Nitrile, 50/BX 10BX/CS, SM-2X
GNDR-(SIZE)-1M	3.7 MIL, Blue Powdered Nitrile, 100/BX 10BX/CS, SM-XL
GNDR-(SIZE)-1	6.0 MIL, Blue Powdered Nitrile, 100/BX 10BX/CS, SM-XL
<b>MEDICAL GRADE</b>	
GNEP-(SIZE)-1	4.3 MIL, Blue Powder Free Nitrile, Examination, 100/BX 10BX/CS, SM-XL
GNEP-(SIZE)-K	4.3 MIL, Black Powder Free Nitrile, Examination, 100/BX 10BX/CS, SM-XL
GNEP-(SIZE)-1P	3.0 MIL, Indigo Powder Free Nitrile, Examination, 100/BX 10BX/CS, SM-XL
GNEP-(SIZE)-5-T8	8.3 MIL, 12" Blue Powder Free Nitrile, Examination, 50/BX 10BX/CS, SM-2X

ALL SAFETY ZONE GLOVES COMPLY WITH THE FFDCA FOR FOOD CONTACT AND ARE DEHP FREE

**BLUE NITRILE**



**INDIGO NITRILE**



**BLACK NITRILE**



# VINYL

 COLOR OPTIONS

<b>GVDR-(SIZE)-HH</b>	<b>Clear Economy Powdered Vinyl, 100/BX 10BX/CS, SM-XL</b>
<b>GVDR-(SIZE)-1</b>	<b>Clear Standard Powdered Vinyl, 100/BX 10BX/CS, SM-XL</b>
<b>GVDR-(SIZE)-1C</b>	<b>Clear Premium Powdered Vinyl, 100/BX 10BX/CS, SM-2X</b>
<b>GVP9-(SIZE)-HH</b>	<b>Clear Economy Powder Free Vinyl, 100/BX 10BX/CS, SM-XL</b>
<b>GVP9-(SIZE)-1</b>	<b>Clear Standard Powder Free Vinyl, 100/BX 10BX/CS, SM-XL</b>
<b>GVP9-(SIZE)-1C</b>	<b>Clear Premium Powder Free Vinyl, 100/BX 10BX/CS, SM-2X</b>
<b>GVPL-(SIZE)-1C</b>	<b>12" Clear Premium Powder Free Vinyl, 100/BAG 10BAG/CS, MD-LG</b>
<b>GVP9-(SIZE)-1-BL</b>	<b>Blue Standard Powder Free Vinyl, 100/BX 10BX/CS, SM-2X</b>
<b>GVP9-(SIZE)-1C-BL</b>	<b>Blue Premium Powder Free Vinyl, 100/BX 10BX/CS, SM-2X</b>
<b>GVP9-(SIZE)-1-BL-MT</b>	<b>Blue Metal Detectable Premium Powder Free Vinyl, 100/BX 10BX/CS, SM-XL</b>
<b>GVDL-(SIZE)-1</b>	<b>Blue Standard Powdered Vinyl, 100/BX 10BX/CS, SM-XL</b>
<b>GVDL-(SIZE)-1C</b>	<b>Blue Premium Powdered Vinyl, 100/BX 10BX/CS, SM-XL</b>
<b>GVNP-(SIZE)-1</b>	<b>Blue Premium Powder Free Vinyl/Nitrile Blend, 100/BX 10BX/CS, SM-2X</b>

ALL SAFETY ZONE GLOVES COMPLY WITH THE FFDCA FOR FOOD CONTACT AND ARE DEHP FREE

CLEAR VINYL

BLUE VINYL

SYNTHETIC

VINYL/NITRILE BLEND



# GLOVES

GVDR-(SIZE)-1C-SY	Synthetic Standard Powdered Vinyl, 100/BX 10BX/CS, SM-XL
GVP9-(SIZE)-1-SY	Synthetic Standard Powder Free Vinyl, 100/BX 10BX/CS, SM-XL
GVP9-(SIZE)-1C-SY	Synthetic Premium Powder Free Vinyl, 100/BX 10BX/CS, SM-2X
GVP3-(SIZE)-1C	Synthetic Premium "Super Stretch" Powder Free Vinyl, 100/BX 10BX/CS, SM-XL
GVP9-(SIZE)-1-SYBL	Blue Synthetic Standard Powder Free Vinyl, 100/BX 10BX/CS, SM-XL
GVP9-(SIZE)-1C-K	Black Powder Free Vinyl, 100/BX 10BX/CS, SM-XL
GVDG-(SIZE)-400C	6.0 MIL, Green Premium Powdered Vinyl, 100/BX 4BX/CS, SM-2X
GVDG-(SIZE)-1200C	6.0 MIL, Green Premium Powdered Vinyl, 300/BX 4BX/CS, SM-2X
GVP9-(SIZE)-1-GR	Green Standard Powder Free Vinyl, 100/BX 10BX/CS, SM-2X
GVP9-(SIZE)-1C-GR	Green Premium Powder Free Vinyl, 100/BX 10BX/CS, SM-XL
GVP9-(SIZE)-1RD	Red Standard Powder Free Vinyl, 100/BX 10BX/CS, SM-XL
GVP9-(SIZE)-1YE	Yellow Standard Powder Free Vinyl, 100/BX 10BX/CS, SM-XL
<b>MEDICAL GRADE</b>	
GVEP-(SIZE)-1C	Clear Premium Powder Free Vinyl, Examination, 100/BX 10BX/CS, SM-XL
GVEP-(SIZE)-1C-SY	Synthetic Premium Powder Free Vinyl, Examination, 100/BX 10BX/CS, SM-XL

ALL SAFETY ZONE GLOVES COMPLY WITH THE FFDCA FOR FOOD CONTACT AND ARE DEHP FREE

BLACK VINYL



GREEN VINYL



RED VINYL



YELLOW VINYL



# CHEMICAL &

 COLOR OPTIONS

GRFY-(SIZE)-2E	12 MIL, Yellow Flock Lined Latex, One Pair Per Bag, 12DZ/CS, SM-XL
GRFY-(SIZE)-1B	16 MIL, Yellow Flock Lined Latex, Bulk Packed Twelve Pair Per Bag, 10DZ/CS, SM-XL
GRFY-(SIZE)-1C	16 MIL, Yellow Flock Lined Latex, One Pair Per Bag, 10DZ/CS, SM-2X
GRFY-(SIZE)-1S	18 MIL, Yellow Flock Lined Latex, One Pair Per Bag, 10DZ/CS, SM-XL
GRFY-(SIZE)-2T-R/C	20 MIL, Yellow Flock Lined Latex, Chlorinated, One Pair Per Bag, 12DZ/CS, SM-XL
GRFY-(SIZE)-4CR	16 MIL, Yellow Retail Packed Flock Lined Latex, One Pair Per Bag, 4DZ/CS, SM-XL
GRFL-(SIZE)-1S	18 MIL, Blue Flock Lined Latex, One Pair Per Bag, 10DZ/CS, SM-XL
GRFL-(SIZE)-2T-R/C	20 MIL, Blue Flock Lined Latex, Chlorinated, One Pair Per Bag, 12DZ/CS, SM-XL
GRFL-(SIZE)-1C	16 MIL, Purple Flock Lined Latex, One Pair Per Bag, 10DZ/CS, SM-XL
GRLY-(SIZE)-1SF	28 MIL, Blue Flock Lined Neoprene Over Yellow Latex, One Pair Per Bag, 10DZ/CS, SM-XL
GRFO-(SIZE)-1SF	28 MIL, Orange Flock Lined Neoprene Latex Blend, One Pair Per Bag, 10DZ/CS, SM-XL

ALL SAFETY ZONE GLOVES COMPLY WITH THE FFDCA FOR FOOD CONTACT AND ARE DEHP FREE

YELLOW FLOCK  
LINED LATEX

BLUE FLOCK  
LINED LATEX

PURPLE FLOCK  
LINED LATEX

BLUE NEOPRENE  
OVER YELLOW LATEX

ORANGE FLOCK  
LINED NEOPRENE  
& LATEX BLEND





# PROCESSING GLOVES

GNGF-(SIZE)-15C	15 MIL, Standard Green Flock Lined Nitrile, One Pair Per Bag, 12DZ/CS, SM-2X
GNGF-(SIZE)-15	15 MIL, Premium Green Flock Lined Nitrile, One Pair Per Bag, 12DZ/CS, SM-2X
GNGU-(SIZE)-11C	11 MIL, Standard Green Nitrile Unlined, One Pair Per Bag, 12DZ/CS, SM-XL
GNGU-(SIZE)-11	11 MIL, Premium Green Nitrile Unlined, One Pair Per Bag, 12DZ/CS, SM-2X
GNGU-(SIZE)-22-18	22 MIL, 18" Green Unlined Nitrile, One Pair Per Bag, 3DZ/CS, MD-2X
GRCA-(SIZE)-1	14 MIL, Amber Unlined Canner Latex, Chlorinated, One Pair Per Bag, 10DZ/CS, SM-XL
GRCA-(SIZE)-1SF	18 MIL, Amber Unlined Canner Latex, Chlorinated, One Pair Per Bag, 10DZ/CS, XS-XL
GRCL-(SIZE)-1	14 MIL, Blue Unlined Latex Canner, Chlorinated, One Pair Per Bag, 10DZ/CS, SM-XL
GRCL-(SIZE)-1SF	18 MIL, Blue Unlined Latex Canner, Chlorinated, One Pair Per Bag, 10DZ/CS, SM-XL
GRBU-(SIZE)-6T	40 MIL, 16" Black Heavy Duty Latex Pot Scrubber, One Pair Per Bag, 6DZ/CS, LG-XL
GRFB-(SIZE)-1S	28 MIL, Black Flock Lined Neoprene Latex Blend, One Pair Per Bag, 10DZ/CS, SM-XL

ALL SAFETY ZONE GLOVES COMPLY WITH THE FFDCA FOR FOOD CONTACT AND ARE DEHP FREE

**GREEN FLOCK LINED & GREEN UNLINED NITRILE**



**NATURAL LATEX CANNERS**



**BLUE LATEX CANNERS**



**BLACK LATEX POT SCRUBBER**



# POLY GLOVES

GDPE-(SIZE)	Clear High Density Polyethylene Glove, 100/BX 10BX/Carton 10Cartons/CS (10,000/Master Case), SM-XL
GDPE-(SIZE)-5	Clear High Density Polyethylene Glove, 500/BX 2BX/Carton 10Cartons/CS (10,000/Master Case), SM-XL
GDPE-(SIZE)-4-500	Clear High Density Polyethylene Glove, 500/BX 4BX/CS (2,000/Master Case), SM-XL
GDPL-(SIZE)	Clear Low Density Polyethylene Glove, 100/BX 10BX/Carton 10Cartons/CS (10,000/Master Case), SM-XL
GDPL-(SIZE)-5	Clear Low Density Polyethylene Glove, 500/BX 2BX/Carton 10Cartons/CS (10,000/Master Case), SM-XL
GDCP-(SIZE)	Clear Polyethylene/Cast Polyethylene Embossed Glove, 100/BX 10BX/CS, SM-XL
GDSH-(SIZE)	Clear Stretch Hybrid Polyethylene Glove, 100/BX 10BX/CS, SM-XL
GDSH-(SIZE)-BL	Blue Stretch Hybrid Polyethylene Glove, 100/BX 10BX/CS, SM-XL
GDPE-LG-18	18" Clear Polyethylene Glove, 250/BX 10BX/CS, Size Large
GDPE-LG-35	35" Clear Polyethylene Glove, 100/BX 10BX/CS, Size Large

ALL SAFETY ZONE GLOVES COMPLY WITH THE FFDCA FOR FOOD CONTACT AND ARE DEHP FREE

**35" CLEAR  
POLYETHYLENE GLOVE**



**18" CLEAR  
POLYETHYLENE GLOVE**



**CLEAR HIGH DENSITY  
POLYETHYLENE GLOVE**

**CAST POLYETHYLENE  
GLOVE**

**CLEAR STRETCH  
HYBRID POLY**

**BLUE STRETCH  
HYBRID POLY**



# SHOE & BOOT COVERS

D_SCL-300	Blue Polypropylene Disposable Non-skid Shoe Cover, 300/CS, LG
D_SCL-300-D	Blue Polypropylene Disposable Non-skid Shoe Cover, Dispenser Boxed, 300/CS, LG-XL
D_SCL-300-(SIZE)	Blue Polypropylene Disposable Non-skid Shoe Cover, 300/CS, LG-2X
D_SCW-300-XL	White Polypropylene Disposable Non-skid Shoe Cover, 300/CS, XL
D_SCW-2-XL-SMS50	White 50 Gram SMS Polypropylene Disposable Shoe Cover, 200/CS, XL
D_SC-CPE-(SIZE)-WH	White Cast Polyethylene "CPE" Embossed Shoe Cover, 300/CS, LG-XL
D_SC-CPE-(SIZE)-BL	Blue Cast Polyethylene "CPE" Embossed Shoe Cover, 300/CS, XL-2X
B_PD3-XL-5	3 MIL, Clear Polyethylene Boot Cover, 50/BG 10BG/CS, XL
B_PD5-(SIZE)-5E	5 MIL, Clear Polyethylene Boot Cover, Elastic Top, 50/BX 10BX/CS, XL-2X
B_PD5-XL-5T	5 MIL, Clear Polyethylene Boot Cover, Ties, 50/BX 10BX/CS, XL
B_N70-(SIZE)	Yellow Heavy Weight Latex Nuke Boot, Grit Sole, Sold by the Pair, 50/CS, MD-3X

**SHOE COVER FIT GUIDE**  
**LARGE** - Fits Shoe Sizes 7-10, Fits Boot Sizes 7-9  
**XLARGE** - Fits Shoe Sizes 9-14, Fits Boot Sizes 10-13  
**2X LARGE** - Fits Shoe Sizes 15-18, Fits Boot Sizes 14-18

D\_SCL-300-(SIZE)



D\_SCW-300-XL



D\_SC-CPE-(SIZE)-WH



D\_SC-CPE-(SIZE)-BL



B\_PD3-XL-5



B\_PD5-XL-5E



B\_PD5-XL-5T



B\_N70-(SIZE)



# GOWNS



DGIH-2X-WH	White Polypropylene Isolation Gown, Ties, 50/CS, 2X
DGIH-XL-Y	Yellow Polypropylene Isolation Gown, Ties, 50/CS, XL
DGIH-2X-GR	Green Polypropylene Isolation Gown, Ties, 50/CS, 2X
DGIH-2X-BL	Blue Polypropylene Isolation Gown, Ties, 50/CS, 2X

DGIH-2X-WH



DGIH-XL-Y



DGIH-2X-GR



DGIH-2X-BL



# SLEEVES

DSWP-18-1	18" White Polyethylene Sleeve, 100/BG 10BG/CS
DSWP-18-1-MM	18" White Machine Made Polyethylene Sleeve, 100/BG 10BG/CS
DSBV-18	18" Blue Vinyl Sleeve, 6 DZ Pair/CS
DSWV-18	18" White Vinyl Sleeve, 6 DZ Pair/CS
DSPP-18-200	18" White Polypropylene Sleeve, 200/CS
DSPP-18-200-PE	18" White Polyethylene Coated Polypropylene Sleeve, 200/CS
DSWP-18-1-CL	18" Clear Polyethylene Sleeve, 100/BG 10BG/CS
DSBP-18-1	18" Blue Polyethylene Sleeve, 100/BG 10BG/CS
DSWH-18-BB	18" White Breathable Microporous Sleeve, 200/CS
TY-14500-200	18" White Dupont™ Tyvek® Sleeve, 200/CS



DSWP-18-1



DSPP-18-200-PE



DSBV-18



DSWP-18-1-CL



DSWV-18



DSBP-18-1



DSPP-18-200



DSWH-18-BB

# BOUFFANT



DBWH-19-1	19" White Bouffant, 100/BG 10BG/CS
DBWH-21-1	21" White Bouffant 100/BG 10BG/CS
DBWH-24-1	24" White Bouffant, 100/BG 10BG/CS
DBWH-28-1	28" White Bouffant, 100/BG 10BG/CS
DBWH-19-1B	19" White Bouffant, 100/BX 10BX/CS
DBWH-21-1B	21" White Bouffant, 100/BX 10BX/CS
DBWH-24-1B	24" White Bouffant, 100/BX 10BX/CS
DBWH-19-5	19" White Bouffant, 100/BG 5BG/CS
DBWH-21-5	21" White Bouffant, 100/BG 5BG/CS
DBWH-24-5	24" White Bouffant, 100/BG 5BG/CS
DBWH-28-5	28" White Bouffant, 100/BG 5BG/CS

DBWH-19-5B	19" White Bouffant, 100/BX 5BX/CS
DBWH-21-5B	21" White Bouffant, 100/BX 5BX/CS
DBWH-24-5B	24" White Bouffant, 100/BX 5BX/CS
DBWH-19-1-PL	19" White Pleated Bouffant, 100/BG 10BG/CS
DBWH-21-1-PL	21" White Pleated Bouffant, 100/BG 10BG/CS
DBWH-24-1-PL	24" White Pleated Bouffant, 100/BG 10BG/CS
DBWH-19-1-LF	19" White 100% Synthetic Bouffant, 100/BG 10BG/CS
DBWH-21-1-LF	21" White 100% Synthetic Bouffant, 100/BG 10BG/CS
DBWH-24-1-LF	24" White 100% Synthetic Bouffant, 100/BG 10BG/CS
DBBL-24-1-LF	24" Blue 100% Synthetic Bouffant, 100/BG 10BG/CS
DBBL-21-1-PL	21" Blue Pleated Bouffant, 100/BG 10BG/CS
DBBL-24-1-PL	24" Blue Pleated Bouffant, 100/BG 10BG/CS

ALL SAFETY ZONE POLYPROPYLENE BOUFFANT CAPS ARE LATEX FREE

PLEATED BOUFFANT CAP



PLEATED BOUFFANT CAPS (BAGGED)



DBWH-(SIZE)-1

DBWH-(SIZE)-1-PL

DBBL-(SIZE)-1-PL



# CAPS



DBBL-19-1	19" Blue Bouffant, 100/BG 10BG/CS
DBBL-21-1	21" Blue Bouffant, 100/BG 10BG/CS
DBBL-24-1	24" Blue Bouffant, 100/BG 10BG/CS
DBBL-21-1B	21" Blue Bouffant, 100/BX 10BX/CS
DBBL-24-1B	24" Blue Bouffant, 100/BX 10BX/CS
DBBL-19-5	19" Blue Bouffant, 100/BG 5BG/CS
DBBL-21-5	21" Blue Bouffant, 100/BG 5BG/CS
DBBL-24-5	24" Blue Bouffant, 100/BG 5BG/CS
DBBL-21-5B	21" Blue Bouffant, 100/BX 5BX/CS
DBBL-24-5B	24" Blue Bouffant, 100/BX 5BX/CS

DBGR-19-1	19" Green Bouffant, 100/BG 10BG/CS
DBGR-21-1	21" Green Bouffant, 100/BG 10BG/CS
DBGR-24-1	24" Green Bouffant, 100/BG 10BG/CS
DBGR-21-5	21" Green Bouffant, 100/BG 5BG/CS
DBGR-24-5	24" Green Bouffant, 100/BG 5BG/CS
DBRE-21-1	21" Red Bouffant, 100/BG 10BG/CS
DBRE-24-1	24" Red Bouffant, 100/BG 10BG/CS
DBYE-21-1	21" Yellow Bouffant, 100/BG 10BG/CS
DBYE-24-1	24" Yellow Bouffant, 100/BG 10BG/CS

ALL SAFETY ZONE POLYPROPYLENE BOUFFANT CAPS ARE LATEX FREE

DBYE-(SIZE)-1

DBGR-(SIZE)-1

DBBL-(SIZE)-1

DBRE-(SIZE)-1



# HAIRNETS

DPHN-18-1	18" White Heavyweight Polyester Hairnet, 100/BG 10BG/CS
DPHN-21-1	21" White Heavyweight Polyester Hairnet, 100/BG 10BG/CS
DPHN-24-1	24" White Heavyweight Polyester Hairnet, 100/BG 10BG/CS
DPHN-27-1	27" White Heavyweight Polyester Hairnet, 100/BG 10BG/CS
DPHN-32-1	32" White Heavyweight Polyester Hairnet, 100/BG 10BG/CS
DPHN-18-1-BR	18" Brown Heavyweight Polyester Hairnet, 100/BG 10BG/CS
DPHN-21-1-BR	21" Brown Heavyweight Polyester Hairnet, 100/BG 10BG/CS
DPHN-24-1-BR	24" Brown Heavyweight Polyester Hairnet, 100/BG 10BG/CS
DPHN-27-1-BR	27" Brown Heavyweight Polyester Hairnet, 100/BG 10BG/CS
DNHN-18-1-RB	18" White Fine Mesh Nylon Hairnet, 100/BG 10BG/CS
DNHN-21-1-RB	21" White Fine Mesh Nylon Hairnet, 100/BG 10BG/CS
DNHN-24-1-RB	24" White Fine Mesh Nylon Hairnet, 100/BG 10BG/CS
DNHN-27-1-RB	27" White Fine Mesh Nylon Hairnet, 100/BG 10BG/CS
DPLW-22-BK	22" Black Lightweight Nylon Hairnet, 144/BX 10BX/CS
DPLW-28-BK	28" Black Lightweight Nylon Hairnet, 144/BX 10BX/CS
DPLW-22-BR	22" Brown Lightweight Nylon Hairnet, 144/BX 10BX/CS
DPLW-28-BR	28" Brown Lightweight Nylon Hairnet, 144/BX 10BX/CS
DPLW-22-WH	22" White Lightweight Nylon Hairnet, 144/BX 10BX/CS
DPLW-28-WH	28" White Lightweight Nylon Hairnet, 144/BX 10BX/CS

ALL SAFETY ZONE HAIRNETS ARE LATEX FREE

DPHN-(SIZE)-1

DPHN-(SIZE)-1-BR

DPLW-(SIZE)-WH

DPLW-(SIZE)-BR





# HOODS & BEARD COVERS

DHWH-1000	White Paper Hat, 100/BG 10BG/CS
DHOOD-1000-XL	White Polypropylene Hood, 100/BG 10BG/CS
DHOOD-2000	White Polypropylene Hood, 100PCS/BG 20BG/CS
DHOOD-1000-BL	Blue Polypropylene Hood, 100PCS/BG 10BG/CS
DBRD-1000	White Polypropylene Beard Cover, 100/BG 10BG/CS
DBRD-1000XL	White Polypropylene Beard Cover, 100/BG 10BG/CS
DBRD-500	White Polypropylene Beard Cover, 100/BG 5BG/CS
DBRD-1000BL	Blue Polypropylene Beard Cover, 100/BG 10BG/CS
DBRD-1000-LF	White 100% Synthetic Beard Cover, 100/BG 10BG/CS
DPBC-1000	White Polyester Mesh Beard Net, 100/BG 10BG/CS
DPBC-1000-BR	Brown Polyester Mesh Beard Net, 100/BG 10BG/CS

ALL SAFETY ZONE HOODS AND BEARD COVERS ARE LATEX FREE

DHWH-1000



DHOOD-2000



DHOOD-1000-BL



DBRD-1000



DBRD-1000BL



DPBC-1000



DPBC-1000-BR



# DISPOSABLE

DCWH-(SIZE)	White Disposable Polypropylene Coverall, No Hood or Elastic, 25/CS, MD-5X
DCWH-(SIZE)-40EWA	White 40 Gram Disposable Polypropylene Coverall, Elastic Wrists & Ankles, 25/CS, MD-6X
DCWF-(SIZE)-40	White 40 Gram Disposable Polypropylene Coverall, Hood, Boots & Elastic Wrist, 25/CS, MD-5
DCWF-(SIZE)	White Disposable Polypropylene Coverall, Hood, Boots & Elastic Wrist, 25/CS, MD-5X
DCBH-(SIZE)	Blue Disposable Polypropylene Coverall, No Hood or Elastic Wrists, 25/CS, MD-5X
DCBF-(SIZE)	Blue Disposable Polypropylene Coverall, Hood, Boots & Elastic Wrist, 25/CS, MD-5X

DCWH-(SIZE)



DCWH-(SIZE)-40EWA



DCWF-(SIZE)



DCBH-(SIZE)



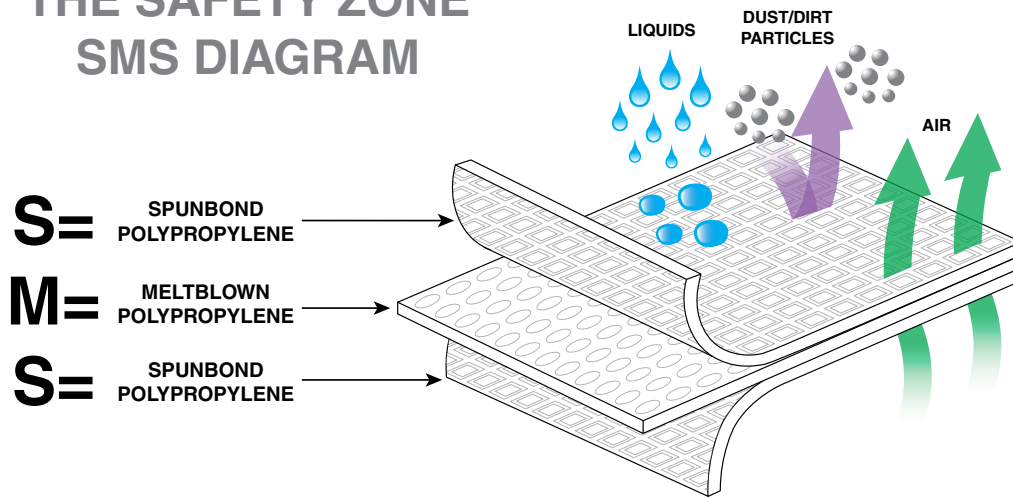
# COVERALLS

DCBH-(SIZE)-SMSEWA Blue SMS Polypropylene Coverall, Elastic Wrists & Ankles, 25/CS, MD-5X

DCWH-(SIZE)-SMSEWA White SMS Polypropylene Coverall, Elastic Wrists & Ankles, 25/CS, MD-5X

DCWF-(SIZE)-SMS White SMS Polypropylene Coverall, Hood, Boots & Elastic Wrist, 25/CS, LG-5X

## THE SAFETY ZONE SMS DIAGRAM



DCBH-(SIZE)-SMSEWA



DCWH-(SIZE)-SMSEWA



DCWF-(SIZE)-SMS



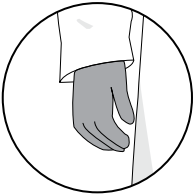
# DISPOSABLE

## DUPONT™ TYVEK® COVERALLS & LAB COAT

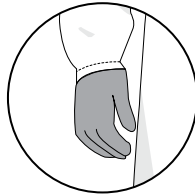
TY-14301-(SIZE)	White Dupont™ Tyvek® Lab Coat, 3 Pockets, 30/CS, SM-2X
TY-14120-(SIZE)	White Dupont™ Tyvek® Coverall, No Hood or Elastic Wrists, 25/CS, SM-4X
TY-14125-(SIZE)	White Dupont™ Tyvek® Coverall, Elastic Wrists & Ankles, 25/CS, SM-4X
TY-14127-(SIZE)	White Dupont™ Tyvek® Coverall, Hood, Elastic Wrists & Ankles, 25/CS, MD-4X
TY-14261-(SIZE)	White Dupont™ Tyvek® Coverall, Hood & Boots, 25/CS, MD-5X



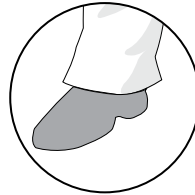
# Tyvek® Coveralls Diagram



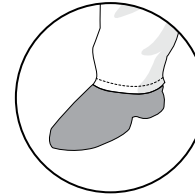
Open Wrists



Elastic Wrists

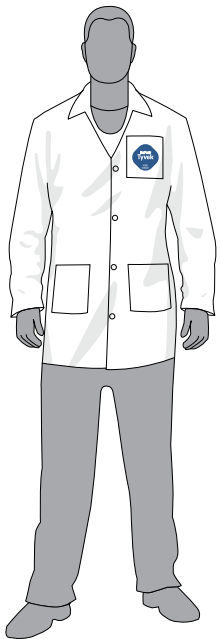


Open Ankles



Elastic Ankles

TY-14301-(SIZE)



Lab Coat with Open Wrists & Ankles

TY-14120-(SIZE)



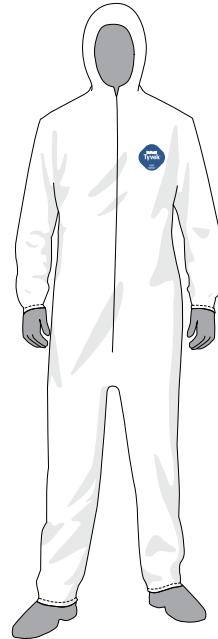
Coverall with Open Wrists & Ankles

TY-14125-(SIZE)



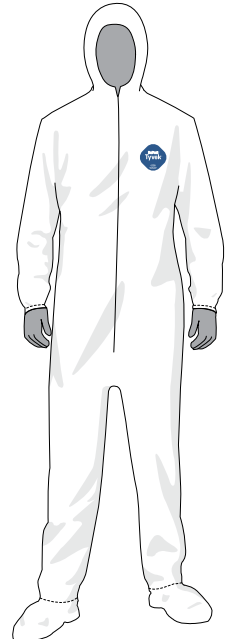
Coverall with Elastic Wrists & Ankles

TY-14127-(SIZE)



Coverall with Elastic Wrists & Ankles with Hood

TY-14261-(SIZE)



Coverall with Elastic Wrists & Ankles with Hood & Boots

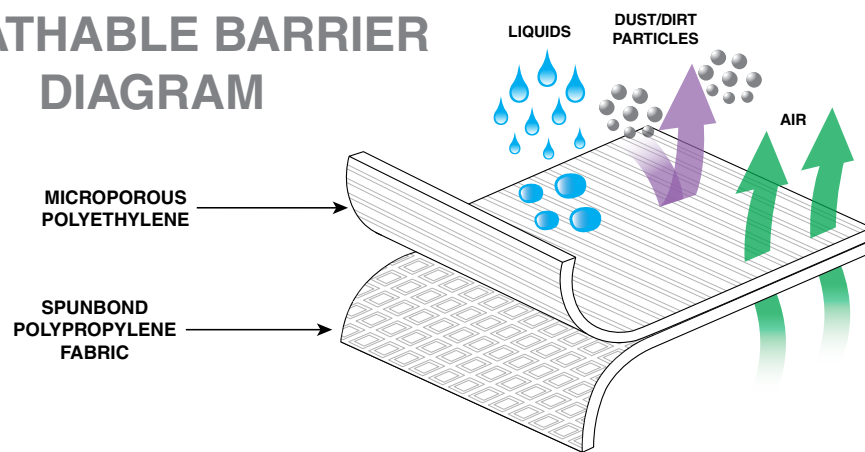


# COVERALLS

## BREATHABLE BARRIER MICROPOROUS COVERALLS

DCWH-(SIZE)-BB	White Breathable Microporous Coverall, No Hood or Elastic, Individually Bagged, 25/CS, SM-5X
DCWH-(SIZE)-BB-EWA	White Breathable Microporous Coverall, Elastic Wrists & Ankles, Individually Bagged, 25/CS, SM-5X
DCWH-(SIZE)-BB-HEWA	White Breathable Microporous Coverall, Hood, Elastic Wrists & Ankles, Individually Bagged, 25/CS, MD-5X
DCWF-(SIZE)-BB	White Breathable Microporous Coverall, Hood, Boots & Elastic Wrists, Individually Bagged, 25/CS, LG-5X
DLWH-(SIZE)-BB	White Breathable Microporous Lab Coat, Elastic Wrists & 3 Pockets, Individually Bagged, 30/CS, MD-5X

## THE SAFETY ZONE BREATHABLE BARRIER DIAGRAM



DCWH-(SIZE)-BB-EWA



DCWF-(SIZE)-BB



DLWH-(SIZE)-BB



# LAB COATS

DLWH-(SIZE)-E	White Polypropylene Economy Weight Lab Coat, 3 Pockets & Open Wrists, 30/CS, MD-5X
DLWH-(SIZE)-ENP	White Polypropylene Economy Weight Lab Coat, No Pockets & Open Wrists, 30/CS, MD-5X
DLWH-(SIZE)	White Polypropylene Lab Coat, 3 Pockets & Elastic Wrists, 30/CS, MD-5X
DLBL-(SIZE)-E	Blue Polypropylene Economy Weight Lab Coat, 3 Pockets & Open Wrists, 30/CS, MD-4X
DLBL-(SIZE)-ENP	Blue Polypropylene Economy Weight Lab Coat, No Pockets & Open Wrists, 30/CS, MD-3X
DLBL-(SIZE)	Blue Polypropylene Lab Coat, 3 Pockets & Elastic Wrists, 30/CS, MD-4X
DLWH-(SIZE)-NP	White Polypropylene Lab Coat, No Pockets & Elastic Wrists, 30/CS, SM-5X
DLBL-(SIZE)-NP	Blue Polypropylene Lab Coat, No Pockets & Elastic Wrists, 30/CS, SM-5X
DLWH-(SIZE)-SMS50	White 50 Gram SMS Polypropylene Lab Coat, Knit Wrist, Collar & 3 Pockets, 30/CS, LG-5X
DLBL-(SIZE)-SMS50	Blue 50 Gram SMS Polypropylene Lab Coat, Knit Wrist, Collar & 3 Pockets, 30/CS, SM-5X
DLWH-(SIZE)-BB	White Breathable Microporous Lab Coat, Elastic Wrists & 3 Pockets, Individually Bagged, 30/CS, MD-5X
TY-14301-(SIZE)	White Dupont™ Tyvek® Lab Coat, 3 Pockets, 30/CS, SM-2X

DLWH-(SIZE)-E

DLWH-(SIZE)

DLBL-(SIZE)

DLBL-(SIZE)-SMS50

DLWH-(SIZE)-BB



# APRONS VINYL

DAV06-35X45	6 MIL 35"X45" Blue Raw Edge Vinyl Apron, String Ties, 6 DZ/CS
DAV06-35X45-DC	6 MIL 35"X45" Blue Die Cut Vinyl Apron, 6 DZ/CS
DAV06-35X45WH	6 MIL 35"X45" Raw Edge White Vinyl Apron, String Ties, 6 DZ/CS
DAV08-35X45WH	8 MIL 35"X45" White Die Cut Vinyl Apron, 6 DZ/CS
DAV20-36X50	20 MIL 36"X50" Green PVC Apron, Stomach Patch, Sold Individually, 96/CS
DAV35-35X50	35 MIL 35"X50" Yellow Vinly Reinforced, Polyester Apron, Sold Individually, 50/CS

DAV06-35X45

DAV06-35X45-DC

DAV08-35X45WH

DAV20-36X50

DAV35-35X50



# DISPOSABLE

DAP1.25-24X42	1 MIL 24"x42" White Apron, Individually Bagged, 100/BX 10BX/CS
DAP1.25-28X46	1 MIL 28"x46" White Apron, Individually Bagged, 100/BX 10BX/CS
DAP1.25-28X46B	1 MIL 28"x46" White Apron, Bulk Packed, 100/BG 10BG/CS
DAP1.25-28X46BL	1 MIL 28"x46" Blue Apron, Bulk Packed, 100/BG 10BG/CS
DAP2.0-28X46-D	2 MIL 28"x46" White Apron, Dispenser Boxed, 100/BX 5BX/CS
DAP2.0-28X46DBL	2 MIL 28"x46" Blue Apron, Dispenser Boxed, 100/BX 5BX/CS
D-100DAP	Wall Mount Wire Rack for DAP10 Aprons

ALL SAFETY ZONE APPAREL COMPLY WITH THE FFDC A FOR FOOD CONTACT AND ARE DEHP FREE

DAP1.25-24X46BL



DAP1.25-24X46



DAP10-28X46-BL  
(HEADER)



DAP10-28X46-WH  
(HEADER)



D-100DAP



DAP1.25-28X46B



DAP2.0-28X46-D



DAP1.25-24X42  
DAP1.25-28X46



DAP2.0-28X46DBL





# APRONS

DAP10-28X46-WH	10 MIC 28"x46" White High Density Apron, 100/Header 10Headers/CS
DAP10-28X46-BL	10 MIC 28"x46" Blue High Density Apron, 100/Header 10Headers/CS
DAP10-28X46-RD	10 MIC 28"x46" Red High Density Apron, 100/Header 10Headers/CS
DAP10-28X46-YE	10 MIC 28"x46" Yellow High Density Apron, 100/Header 10Headers/CS
DAPP-28X36-100	28"x36" White Polypropylene Apron, 100/Case
DAPP-28X36-PE	28"x36" White Polyethylene Coated Polypropylene Apron, 100/CS
CPE-(SIZE)-PE	Blue Cast Polyethylene "CPE" Apron, Thumb Hole Sleeves, 100/CS, LG or XL

ALL SAFETY ZONE APPAREL COMPLY WITH THE FFDCA FOR FOOD CONTACT AND ARE DEHP FREE

DAP10-28X46-WH



DAP10-28X46-BL



DAP10-28X46-RD



DAP10-28X46-YE



CPE-(SIZE)-PE



# HEAVY DUTY

## HYCAR

AP-WH-45MT	14 Oz. 36"x45" Medium Weight White Hycar Apron, Four Grommets & String Ties, 12/CS
AP-WH-48MT	14 Oz. 36"x48" Medium Weight White Hycar Apron, Four Grommets & String Ties, 12/CS
AP-WH-48HT	16 Oz. 36"x48" Heavy Weight White Hycar Apron, Four Grommets & String Ties, 12/CS
AP-MH-48MT	14 Oz. 36"x48" Medium Weight Maroon Hycar Apron, Four Grommets & String Ties, 12/CS
AP-MH-48HT	16 Oz. 36"x48" Heavy Weight Maroon Hycar Apron, Four Grommets & String Ties, 12/CS
AP-BH-45MT	14 Oz. 36"x45" Medium Weight Black Hycar Apron, Four Grommets & String Ties, 12/C
AP-BH-48MT	14 Oz. 36"x48" Medium Weight Black Hycar Apron, Four Grommets & String Ties, 12/CS
AP-YH-45MT	14 Oz. 36"x45" Medium Weight Yellow Hycar Apron, Four Grommets & String Ties, 12/CS
AP-YH-48MT	14 Oz. 36"x48" Medium Weight Yellow Hycar Apron, Four Grommets & String Ties, 12/CS
AP-YH-45HT	16 Oz. 36"x45" Heavy Weight Yellow Hycar Apron, Four Grommets & String Ties, 12/CS
AP-YH-48HT	16 Oz. 36"x48" Heavy Weight Yellow Hycar Apron, Four Grommets & String Ties, 12/CS
AP-YH-48HBP	16 Oz. 36"x48" Heavy Weight Yellow Hycar Apron, 26 Oz. Belly Patch, Four Grommets & String Ties, 12/CS
AP-YH-48HBPP	16 Oz. 36"x48" Heavy Weight Yellow Hycar Apron, 26 Oz. Belly Patch, Adjustable Buckle On Neck, Four Grommets & String Ties, 12/CS

YELLOW  
HYCAR APRON



WHITE  
HYCAR APRON



MAROON  
HYCAR APRON



# APRONS

## URETHANE

AP-WU-48 4 Oz. 35"x48" White Urethane Apron, Four Metal Grommets & String Ties, 12/CS

AP-BU-55 4 Oz. 35"x55" Blue Urethane Apron, Four Metal Grommets & String Ties, 12/CS

AP-YU-55 4 Oz. 35"x55" Yellow Urethane Apron, Four Metal Grommets & String Ties, 12/CS

## NEOPRENE

AP-BN-45MT 14 Oz. 36"x45" Medium Weight Black Neoprene Apron, Four Grommets & String Ties, 12/CS

AP-BN-45HT 18 Oz. 36"x45" Heavy Weight Black Neoprene Apron, Four Grommets & String Ties, 12/CS

## BONING APRON

AP-BON-APN 3/8" Thick 14"x18" White Boning Apron, PVC on Two Sides of Hemp & Adjustable Buckle Strap, 12/CS  
(To be worn under an apron)

BLUE  
URETHANE APRON



BLACK  
NEOPRENE APRON



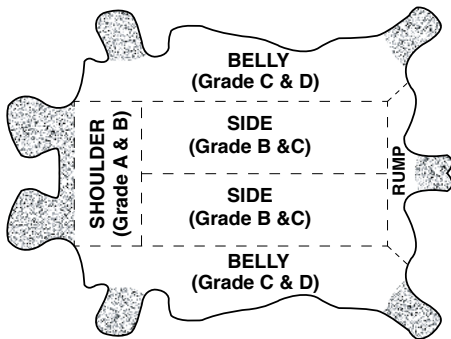
WHITE  
BONING APRON



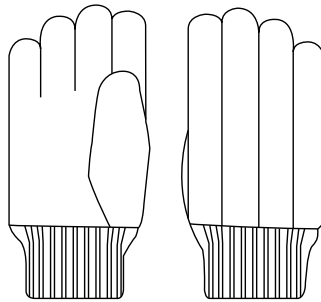
# LEATHER

GLP1-(SIZE)-A1C	“A/B” Grade, Clute Cut Leather Palm, Knit Wrist, 20DZ/CS, Mens or Womens
GLP1-MN-H4D	“B” Grade, Gunn Cut Leather Patch Palm, Knit Wrist, 10DZ/CS, Mens
GLP1-MN-N4D	“B” Grade, Gunn Cut Leather Patch Palm, Denim Safety Cuff, 10DZ/CS, Mens
GLP1-(SIZE)-C2C	“A/B” Grade, Gunn Cut Leather Palm, Pasted Safety Cuff, 10DZ/CS, Mens or Womens
GLP1-(SIZE)-B2D	“B” Grade, Gunn Cut Leather Palm, Rubberized Safety Cuff, 10DZ/CS, Mens or Womens
GLP1-(SIZE)-H1C	“A/B” Grade, Gunn Cut Leather Palm, Green & Red Cotton Knit Wrist, 10DZ/CS, Mens or Womens
GLP1-MN-H2C	“A/B” Grade, Gunn Cut Leather Palm, Blue & Red Cotton, Knit Wrist, 10DZ/CS, Mens
GLP1-(SIZE)-B1C	“A/B” Grade, Gunn Cut Leather Palm, Rubberized Safety Cuff, 10DZ/CS, Mens, Womens or XL
GLP1-MN-B2B	“A” Grade, Gunn Cut Leather Palm, Rubberized Safety Cuff, 10DZ/CS, Mens
GLP1-MN-E2D	“B” Grade, Gunn Cut Leather Patch Palm, Pasted Safety Cuff, 10DZ/CS, Mens
GLP1-MN-B7C	“A” Grade, Gunn Cut Leather Palm, Orange Rubberized Safety Cuff, 10DZ/CS, Mens
GLP1-MN-B3A	“Premium A” Grade, Gunn Cut Leather Palm, Rubberized Safety Cuff, 10DZ/CS, Mens
GLF1-MN-B1C	“A/B” Grade, Gunn Cut Leather Palm, Full Leather Back, Rubberized Safety Cuff, 10DZ/CS, Mens

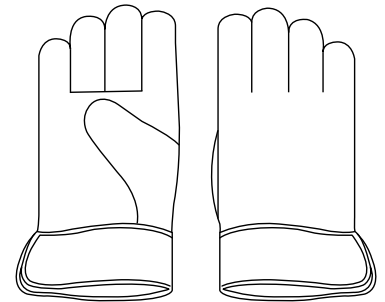
## GRADES OF LEATHER



## CLUTE CUT



## GUNN CUT



GLP1-(SIZE)-A1C



GLP1-MN-H4D



GLP1-MN-N4D



# GLOVES

GLP1-(SIZE)-E2D



GLP1-(SIZE)-B2D



GLP1-MN-H1C



GLP1-MN-H2C



GLP1-(SIZE)-B1C



GLP1-MN-B2B



GLP1-MN-B7C



GLP1-MN-B3A



GLF1-MN-B1C



# LEATHER GLOVES

GLP1-(SIZE)-G1C	“A/B” Grade Gunn Cut Leather, 4½” Rubberized Gauntlet Cuff, 1DZ Pair/Bag 10DZ/CS, Mens or XL
GLP1-MN-G2B	“A” Grade Gunn Cut Leather, 4½” Rubberized Gauntlet Cuff, 1DZ Pair/Bag 10DZ/CS, Mens
GLF1-MN-G1C	“A/B” Grade Gunn Cut Full Leather Back, 4½” Rubberized Gauntlet Cuff, 1DZ Pair/Bag 10DZ/CS, Mens
GLR1-MN-B2S	“A/B” Grade Gunn Cut Double Reinforced Leather Palm, Rubberized Cuff, 1DZ Pair/Bag 10DZ/CS, Mens
GLR1-MN-B1S	“A/B” Grade Gunn Cut Double Reinforced Leather Palm, Rubberized Cuff, 1DZ Pair/Bag 10DZ/CS, Mens
GLR1-MN-B1C	“A/B” Grade Double Reinforced Leather Palm, Rubberized Safety Cuff, 1DZ Pair/Bag 10DZ/CS, Mens
GLR1-MN-B2B	“A” Grade Double Reinforced Leather Palm, Rubberized Safety Cuff, 1DZ Pair/Bag 10DZ/CS, Mens

GLP1-(SIZE)-G1C



GLP1-MN-G2B



GLF1-MN-G1C



GLR1-MN-B2S



GLR1-MN-B1S



GLR1-MN-B1C



# WELDERS & DRIVERS GLOVES

GLW1-MN-W8C	“A/B” Grade Gunn Cut Gray Leather Welders, 1DZ Pair/Bag 6DZ/CS, Mens
GLW1-MN-W9A	“A” Grade Gunn Cut Blue Leather Welders, Kevlar Stitching, 1DZ Pair/Bag 6DZ/CS, Mens
GLD1-(SIZE)-S8C	“A/B” Grade Gunn Cut Gray Leather Drivers, Straight Thumb, 1DZ Pair/Bag 10DZ/CS, SM-XL
GLD5-(SIZE)-P0B	“A/B” Top Grain Pig Gunn Cut Drivers, Keystone Thumb, 1DZ Pair/Bag 10DZ/CS, SM-2X
GLD2-(SIZE)-P0B	“A/B” Top Grain Cow Gunn Cut Drivers, Keystone Thumb, 1DZ Pair/Bag 10DZ/CS, SM-3X

GLW1-MN-W8C



GLW1-MN-W9A



GLD1-(SIZE)-S8C



GLD5-(SIZE)-P0B

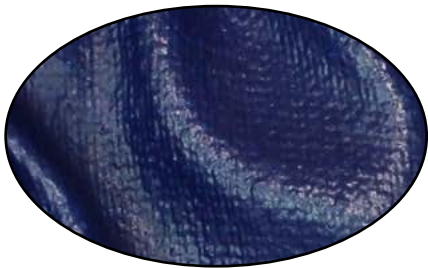


GLD2-(SIZE)-P0B

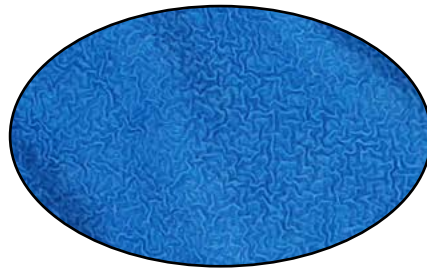


# COATED

GSPC-(SIZE)-2C	Blue Latex Coated String Knit, 1DZ Pair/Bag 18DZ/CS, MD-XL
GRSL-(SIZE)	Premium Blue Latex Coated Gray String Knit, 1DZ Pair/Bag 6DZ/CS, SM-XL
GRSL-(SIZE)-TR	Premium Gray Latex Coated Gray String Knit, Terry Loop Thermal Lining, 1DZ Pair/Bag 6DZ/CS, SM-XL
G-NIDEX-(SIZE)	Black Nitrile Coated Nylon Knit, 1DZ Pair/Bag 6DZ/CS, SM-2X
G-NIDEX-(SIZE)-GF	Gray Foam Nitrile Coated Nylon Knit, 1DZ Pair/Bag 6DZ/CS, XS-2X
G-NU- (SIZE)-4-GY-GY	Gray Polyurethane Coated Gray Nylon Knit, 1DZ Pair/Bag 6DZ/CS, XS-2X
GS13-(SIZE)-CYPY	Gray Polyurethane Coated Cut-Resistant High-Pressure Polyethylene "HPPE" Knit, Cut Level 3, Sold by the Pair, 6DZ/CS, XS-2X
G-HIDEX-(SIZE)	High Dexterity Glove, Stretch Nylon Back & Vibration Absorbing Palm, Sold by the Pair, 50PRS/CS, XS-2X
G-HIDEX-(SIZE)-2	High Dexterity Glove, Stretch Nylon Back & Single Layer Palm, Sold by the Pair, 50PRS/CS, SM-2X
G-NC- (SIZE)-MN/WN	Cut & Sewn Nitrile Gloves, Perforated Back, 1DZ Pair/Bag 12DZ/CS, Mens or Womens, SM-XL



GSPC-(SIZE)-2C



GRSL-(SIZE)



GRSL-(SIZE)-TR

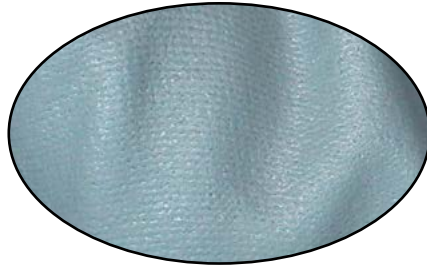




# KNIT GLOVES



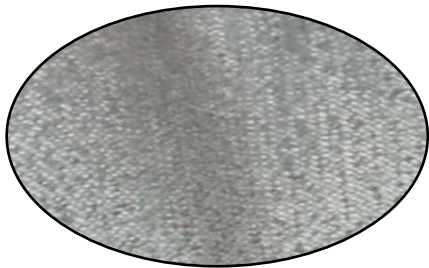
G-NIDEX-(SIZE)



G-NIDEX-(SIZE)-GF



GMPU-(SIZE)-4-GY-GY



GS13-(SIZE)-CYPV



G-HIDEX-(SIZE)



G-HIDEX-(SIZE)-2



# COATED KNIT GLOVES

GRKW-MN-1	Yellow Crinkle Finish Latex, Cut Resistant, Knit Wrist, 1DZ Pair/Bag 10DZ/CS, Mens
GRSC-MN-1	Yellow Crinkle Finish Latex, Cut Resistant, Safety Cuff, 1DZ Pair/Bag 10DZ/CS, Mens
GNKW-MN-12	Blue Nitrile Dipped Smooth Finish, Knit Wrist, 1DZ Pair/Bag 12DZ/CS, Mens
GNSC-MN-12	Blue Nitrile Dipped Smooth Finish, Safety Cuff, 1DZ Pair/Bag 12DZ/CS, Mens

GRKW-MN-1



GRSC-MN-1



GNKW-MN-12



GNSC-MN-12



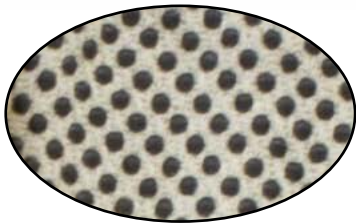
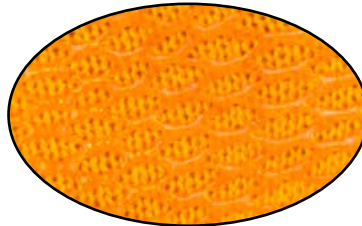
# DOTTED GLOVES

GJBC-KW-1-PD	Black PVC Dotted Palm Brown Jersey, 1DZ Pair/Bag 25DZ/CS, LG
GSCC-(SIZE)	PVC Criss-Cross Grip on Orange Nylon Knit, 1DZ Pair/Bag 12DZ/CS, SM-XL
GSBS-(SIZE)-2C-20	Black PVC Dotted 1 Sided Cotton Polyester String Knit, 1DZ Pair/Bag 20DZ/CS, MD-LG
GSBS-(SIZE)-2P-20	Premium Black PVC Dotted 1 Sided Cotton Polyester String Knit, 1DZ Pair/Bag 20DZ/CS, MD-LG
GSBD-(SIZE)-2C-20	Black PVC Dotted 2 Sided Cotton Polyester String Knit, 1DZ Pair/Bag 20DZ/CS, MD-LG
GSBD-(SIZE)-2P-20	Premium Black PVC Dotted 2 Sided Cotton Polyester String Knit, 1DZ Pair/Bag 20DZ/CS, MD-LG
GCD8-(SIZE)-1C	Black PVC Dotted Cotton Polyester Canvas Clute Cut, Knit Wrist, 1DZ Pair/Bag 25DZ/CS, MD-LG

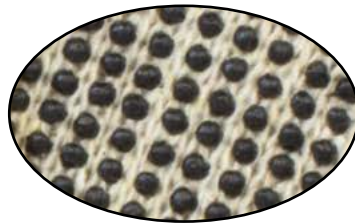
GJBC-KW-1-PD



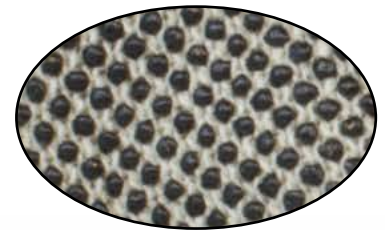
GSCC-(SIZE)



GCD8-(SIZE)-1C



GSBS-(SIZE)-2C-20



GSBD-(SIZE)-2P-20



# INSPECTORS GLOVES

GILW-(SIZE)-1	100% Cotton Lisle Light Weight Inspector Glove, 1DZ Pair/Bag 100DZ/CS, MD-LG
GIMW-(SIZE)-1SP	100% Cotton Lisle Medium Weight Inspectors Glove, 1DZ Pair/Bag 100DZ/CS, MD-LG
GI4W-(SIZE)-4-100	Synthetic Mens Inspectors, 40 Denier, 1DZ Pair/Bag 100DZ/CS, SM-XL
GI4L-(SIZE)-4-100	Synthetic Womens Inspectors, 40 Denier, 1DZ Pair/Bag 100DZ/CS, MD-XL
GILW-M2-1P	12" 100% Cotton Lisle Light Weight Inspector Glove, 1DZ Pair/Bag 100DZ/CS, LG
GILW-M4-1P	14" 100% Cotton Lisle Light Weight Inspector Glove, 1DZ Pair/Bag 100DZ/CS, LG
GIMW-M2-1P	12" 100% Cotton Lisle Medium Weight Inspector Glove, 1DZ Pair/Bag 100DZ/CS, LG
FPF-(SIZE)	Powder Free Latex Finger Cots, 5 Gross Per Bag, (720/BG) 40Bags/CS, SM-XL
FPB-(SIZE)	Powder Free Latex Finger Cots, 1 Gross Per Box, (144/BX) 200Boxes/CS, SM-XL

GILW-(SIZE)-1



GIMW-(SIZE)-1SP



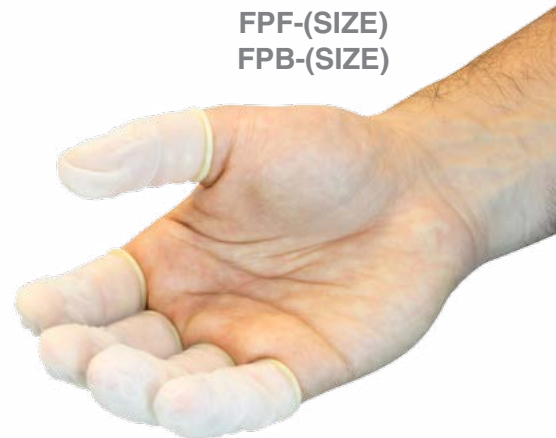
GI4W-(SIZE)-4-100  
GI4L-(SIZE)-4-100



GILW-M2-1  
GIMW-M2-1



FPF-(SIZE)  
FPB-(SIZE)



# STRING KNIT GLOVES

GSLW-(SIZE)-2C-NRB	Light Weight Cotton Polyester String Knit, 1DZ Pair/Bag 40DZ/CS, MD-LG
GSLW-(SIZE)-2P-NRB	Premium Light Weight Cotton Polyester String Knit, 1DZ Pair/Bag 40DZ/CS, MD-LG
GSMW-(SIZE)-2C-NRB	Medium Weight Cotton Polyester String Knit, 1DZ Pair/Bag 25DZ/CS, MD-LG
GSMW-(SIZE)-2P-NRB	Premium Medium Weight Cotton Polyester String Knit, 1DZ Pair/Bag 25DZ/CS, MD-LG
GSHW-(SIZE)-1C-NRB	Heavy Weight Cotton Polyester String Knit, 1DZ Pair/Bag 25DZ/CS, MD-LG
GSMW-(SIZE)-2C-BW70	Bright White Medium Weight Cotton Polyester String Knit, 1DZ Pair/Bag 25DZ/CS, MD-LG
GSMW-(SIZE)-2C-GY	Gray Medium Weight Cotton Polyester String Knit, 1DZ Pair/Bag 30DZ/CS, MD-LG
GSBG-(SIZE)	Cut-Resistant String Knit, Spectra Wrapped Stainless Steel Core, Sold by the Glove, XS-XL

(NRB = NO RUBBER BAND)

GSLW-(SIZE)-2C-2NRB  
GSLW-(SIZE)-2P-2NRB



GSMW-(SIZE)-2C-NRB  
GSMW-(SIZE)-2P-NRB



GSHW-(SIZE)-1C-NRB



GSMW-(SIZE)-2C-BW70



GSMW-(SIZE)-2C-GY



GSBG-(SIZE)



# INSULATED

GJBC-MN-1-RL-12	Insulated Cotton Polyester Brown Jersey, Red Jersey Lining, 1DZ Pair/Bag 12DZ/CS, Mens
GRSL-(SIZE)-TR	Premium Gray Latex Coated Gray String Knit, Terry Loop Thermal Lining, 1DZ Pair/Bag 6DZ/CS, SM-XL
G-HIDEX-(SIZE)-TH	High Dexterity Glove, Stretch Nylon Back, Single Layer Palm Thinsulate® Lining, Sold by the Pair, 50PRS/CS, SM-XL
GLL5-(SIZE)-P0B	Premium Top Grain Pig Drivers, Keystone Thumb, Jersey Lining, 1DZ Pair/Bag 10DZ/CS, MD-XL
GLL2-(SIZE)-P0B	Premium Top Grain Cow Drivers, Keystone Thumb, Jersey Lining, 1DZ Pair/Bag 10DZ/CS, SM-XL
GLL5-(SIZE)-P0B-TH	Premium Top Grain Pig Drivers, Keystone Thumb, Thinsulate® Lining, 1DZ Pair/Bag 6DZ/CS, LG-XL
GLL7-(SIZE)-TH	Black Soft Grain Leather Drivers, Keystone Thumb, Thinsulate™ Lining, Sold by the Pair, MD-XL

GJBC-(SIZE)-MN-1-RL-12



GRSL-(SIZE)-TR



G-HIDEX-(SIZE)-TH



GLL5-(SIZE)-P0B



GLL2-(SIZE)-P0B



GLL5-(SIZE)-P0B-TH



GLL7-(SIZE)-TH



# GLOVES

GLL2-(SIZE)-KT	Premium Top Grain Cow Drivers, Keystone Thumb, Thinsulate™ Lining, 1DZ Pair/Bag 6DZ/CS, MD-XL
GLL2-(SIZE)-KP	Premium Top Grain Cow Drivers, Keystone Thumb, Pile Lining, 1DZ Pair/Bag 6DZ/CS, MD-XL
GLL1-(SIZE)-SF	Split Cow Leather Drivers, Straight Thumb, Flannel Lining, 1DZ Pair/Bag 6DZ/CS, LG-XL
GLL1-(SIZE)-P7A-T	Split Cow Leather Drivers, Keystone Thumb, Thinsulate™ Lining, 1DZ Pair/Bag 6DZ/CS, SM-3X
GLL1-XL-B3A	Premium Grade Leather, Rubberized Safety Cuff, Jersey Lining, 1DZ Pair/Bag 10DZ/CS, XL
GLL1-(SIZE)-GP	Premium Grade Leather, Rubberized Safety Cuff, Pile Lining, 1DZ Pair/Bag 6DZ/CS, LG-XL
GLL2-(SIZE)-B3A	Premium Grade Leather, Rubberized Safety Cuff, Pile Lining, 1DZ Pair/Bag 6DZ/CS, LG-XL
GLL5-(SIZE)-GT	Premium Top Grain Pig Leather, Safety Cuff, Fleece Lining, 1DZ Pair/Bag 6DZ/CS, LG-XL

GLL2-(SIZE)-KT



GLL2-(SIZE)-KP



GLL1-(SIZE)-SF



GLL1-(SIZE)-P7A-T



GLL1-(XL)-B3A



GLL1-(SIZE)-GP



GLL2-(SIZE)-B3A



GLL5-(SIZE)-GT



# COTTON JERSEY & CANVAS GLOVES

GJWR-(SIZE)-1P	Reversible 100% Cotton Natural Jersey, 1DZ Pair/Bag 25DZ/CS, Mens or Womens
GJBC-(SIZE)-1	Brown Jersey Clute Cut, Knit Wrist, 1DZ Pair/Bag 25DZ/CS, Mens or Womens
GC08-(SIZE)-2C	8 Oz. Cotton Polyester Canvas Clute Cut, Knit Wrist, 1DZ Pair/Bag 25DZ/CS, Mens or Womens
GC08-(SIZE)-1P	8 Oz. 100% Cotton Canvas Clute Cut, Knit Wrist, 1DZ Pair/Bag 25DZ/CS, Mens or Womens
GC10-MN-1P	10 Oz. 100% Cotton Canvas Clute Cut, Knit Wrist, 1DZ Pair/Bag 25DZ/CS, Mens
GC12-MN-1P	12 Oz. 100% Cotton Canvas Clute Cut, Knit Wrist, 1DZ Pair/Bag 25DZ/CS, Mens
PAD-9X11	9" X 11" Terry Cloth Baking Pad, Double Thick with Elastic Strap, Sold by the Dozen

GJWR-(SIZE)-1P



GJBC-(SIZE)-1C



PAD-9X11



GC08-(SIZE)-1P



GC10-(SIZE)-1P



GC12-(SIZE)-1P





# HEAT RESISTANT GLOVES

<b>GHKI-18-1C</b>	18 Oz. Hot Mill Nap In, Knit Wrist, 1DZ Pair/Bag 10DZ/CS, One Size Fits All
<b>GHKO-18-1</b>	18 Oz. Hot Mill Nap Out, Knit Wrist, 1DZ Pair/Bag 10DZ/CS, One Size Fits All
<b>GHBT-18-1C</b>	18 Oz. Cotton Hot Mill, Band Top, 1DZ Pair/Bag 10DZ/CS, One Size Fits All
<b>GHBT-24-1C</b>	24 Oz. Cotton Hot Mill, Band Top, 1DZ Pair/Bag 10DZ/CS, One Size Fits All
<b>GHBT-26-1C</b>	26 Oz. Cotton Hot Mill, Band Top, 1DZ Pair/Bag 10DZ/CS, One Size Fits All
<b>GHGT-24-1C</b>	24 Oz. Cotton Hot Mill, 4½” Gauntlet Cuff, 1DZ Pair/Bag 10DZ/CS, One Size Fits All
<b>GT24-LG-12</b>	24 Oz. Terry Cloth, Knit Wrist, 1DZ Pair/Bag 10DZ/CS, One Size Fits All
<b>GHKG-18-1C</b>	18 Oz. Golden Fleece Chore, Knit Wrist, 1DZ Pair/Bag 10DZ/CS, One Size Fits All

**GHKI-18-1C**



**GHKO-18-1**



**GHBT-18-1C**  
**GHBT-24-1C**  
**GHBT-26-1C**



**GHGT-24-1C**



**GT24-LG-12**



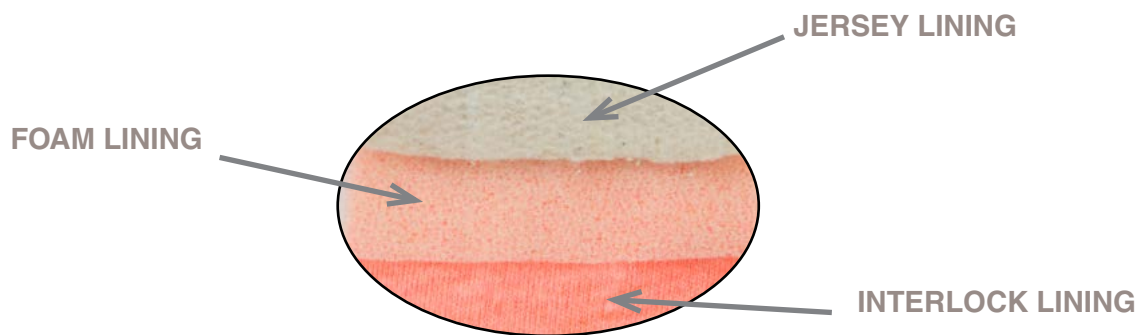
**GHKG-18-1**



# ORANGE PVC GLOVES

GPOF-KW-2R-3	Orange PVC, Jersey Insulated Foam Lining, Knit Wrist, Rough Finish, 1DZ Pair/Bag 3DZ/CS
GPOF-SC-2R-3	Orange PVC, Jersey Insulated Foam Lining, Safety Cuff, Rough Finish, 1DZ Pair/Bag 3DZ/CS
GPOF-10-2R-3	10" Orange PVC, Jersey Insulated Foam Lining, Rough Finish, 1DZ Pair/Bag 3DZ/CS
GPOF-12-2R-3	12" Orange PVC, Jersey Insulated Foam Lining, Rough Finish, 1DZ Pair/Bag 3DZ/CS
GPOF-14-2R-3	14" Orange PVC, Jersey Insulated Foam Lining, Rough Finish, 1DZ Pair/Bag 3DZ/CS

## 3 LAYER INSULATED PVC



GPOF-KW-2R-3



GPOF-SC-2R-3



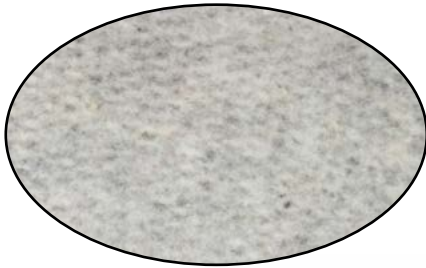
GPOF-10-2R-3  
GPOF-12-2R-3  
GPOF-14-2R-3



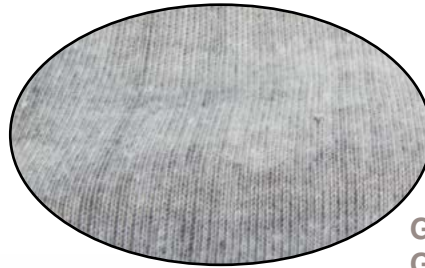
# BLACK PVC GLOVES

GPBJ-KW-2R-6	Black Double Dipped PVC, Jersey Lining, Knit Wrist, Rough Finish, 1DZ Pair/Bag 6DZ/CS
GPBI-KW-1P-1	Black Single Dipped PVC, Interlock Lining, Knit Wrist, Pimple Finish, 1DZ Pair/Bag 10DZ/CS
GPBI-KW-1S-1	Black Single Dipped PVC, Interlock Lining, Knit Wrist, Smooth Finish, 1DZ Pair/Bag 10DZ/CS
GPBJ-10-2R-6	10" Black Double Dipped PVC, Jersey Lining, Rough Finish, 1DZ Pair/Bag 6DZ/CS
GPBJ-12-2R-6	12" Black Double Dipped PVC, Jersey Lining, Rough Finish, 1DZ Pair/Bag 6DZ/CS
GPBJ-14-2R-6	14" Black Double Dipped PVC, Jersey Lining, Rough Finish, 1DZ Pair/Bag 6DZ/CS
GPBJ-18-2R-6	18" Black Double Dipped PVC, Jersey Lining, Rough Finish, 1DZ Pair/Bag 6DZ/CS
GPBI-12-1P-1	12" Black Single Dipped PVC, Interlock Lining, Pimple Finish, 1DZ Pair/Bag 10DZ/CS
GPBI-10-1S-1	10" Black Single Dipped PVC, Interlock Lining, Smooth Finish, 1DZ Pair/Bag 10DZ/CS
GPBI-12-1S-1	12" Black Single Dipped PVC, Interlock Lining, Smooth Finish, 1DZ Pair/Bag 10DZ/CS
GPBI-14-1S-1	14" Black Single Dipped PVC, Interlock Lining, Smooth Finish, 1DZ Pair/Bag 10DZ/CS
GPBI-18-1S-1	18" Black Single Dipped PVC, Interlock Lining, Smooth Finish, 1DZ Pair/Bag 10DZ/CS

## JERSEY LINING



## INTERLOCK LINING



GPBJ-KW-2R-6



GPBJ-10-2R-6  
GPBJ-12-2R-6  
GPBJ-14-2R-6  
GPBJ-18-2R-6



GPBI-10-1S-1  
GPBI-12-1S-1  
GPBI-14-1S-1  
GPBI-18-1S-1



# PROTECTIVE

## EYE WEAR

ES-21	Black, Blue or USA Frame, Clear or Smoke Lens & Adjustable Temple, ANSI Z87+ Approved, 12Pair/BX
ES-32	Wrap Around Style, Black, Blue or USA Frame, Clear, Smoke or Indoor/ Outdoor Lens & Articulating Adjustable Temple, ANSI Z87+ Approved, 12Pair/BX
ES-41	Wrap Around Style, Black Frame, Clear, Smoke or Indoor/ Outdoor Lens & Adjustable Temple, ANSI Z87+ Approved, 12Pair/BX
ES-51	Wrap Around Style, Clear or Smoke Frame, Clear, Smoke or Indoor/ Outdoor Lens, ANSI Z87+ Approved, 12Pair/BX
ES-VS	Visitor Specs, Clear Frame & Clear Lens, ANSI Z87+ Approved, 12Pair/BX
ES-GP	Perforated Impact Goggle, ANSI Z87+ Approved, 24Pair/BX
ES-GC	Chemical Impact Goggle, Indirect Ventilation, ANSI Z87+ Approved, 24Pair/BX
ES-GC/AF	Chemical Impact Goggle, Indirect Ventilation & Anti Fog Lens, ANSI Z87+ Approved, 24Pair/BX

## LENS CLEANING

ES-LCT	Safety Zone Pre Moistened Anti-Fog Lens Cleaning Towelettes, 100BX 10BX/CS
ES-LCS-8	Safety Zone Lens Cleaning Station, 8 Oz. Anti-Fog Lens Cleaning Solution, 600Tissues/BX 10BX/CS
ES-LCS-16	Safety Zone Lens Cleaning Station, 16 Oz. Anti-Fog Lens Cleaning Solution, 1,200Tissues/BX 4BX/CS

ES-LCT



ES-LCS-8



ES-LCS-16



# EYEWEAR

ES-21BKCL



ES-21USACL



ES-21BKSM



ES-32BKCL



ES-32BKIO



ES-32BKSM



ES-41BKCL



ES-41BKIO



ES-41BKSM



ES-51FTCL



ES-51CLIO



ES-51BKSM



ES-VS



ES-GP



ES-GC  
ES-GC/AF



# HEARING PROTECTION

RM-6405	Moldex® Rockets NRR 27dB Reusable Earplugs, Corded with Pocket-Pak Case, 50 Pairs/BX, 4 BX/CS
RM-6604	Moldex® SparkPlugs NRR 33dB Foam Uncorded Earplugs, 200 Pairs/BX, 10BX/CS
RM-6654	Moldex® SparkPlugs NRR 33dB Foam Corded Earplugs, 100 Pairs/BX, 20BX/CS
RM-6644	Moldex® SparkPlugs PlugStation Dispenser, 250 Pairs/Dispenser, 6 Dispensers/CS
RM-6645	Moldex® SparkPlugs PlugStation Dispenser, 500 Pairs/Dispenser, 4 Dispensers/CS
RM-6880	Moldex® Corded SparkPlugs PlugStation Dispenser, 150 Pairs/Dispenser, 4 Dispensers/CS
QB3HYG	Howard Leight® Banded Ear Plug, 23 NRR, 1/BG 10BG/CS
RH-QM24+	Howard Leight® Multiple-Position Earmuff, 25 NRR, Sold by the Each
RH-LL-1	Howard Leight Laser Lite® Uncorded Ear Plug, 32 NRR, 200 Pairs/BX 10BX/CS
RH-LL-30	Howard Leight Laser Lite® Corded Ear Plug, 32 NRR, 100 Pairs/BX 10BX/CS
RH-MAX-1	Howard Leight Max® Uncorded Ear Plug, 33 NRR, 200 Pairs/BX 10BX/CS
RH-MAX-30	Howard Leight Max® Corded Ear Plug, 33 NRR, 100 Pairs/BX 10BX/CS
RH-LPF-30	Howard Leight Max Lite® Corded Ear Plug, 30 NRR, 100 Pairs/BX 10BX/CS
RH-LT-30	Howard Leight Laser Track® Metal Detectable Corded Ear Plug, 32 NRR, 100 Pairs/BX 10BX/CS



RM-6405



RM-6604



RM-6654



RM-6644



RM-6645



RM-6880



QB3HYG



RH-QM24+



RH-LL-30



RH-MAX-1



RH-LPF-30



RH-LT-30



# RESPIRATORY PROTECTION



RS-600	Pleated Tie On Procedural Mask, 50/BX 10BX/CS
RS-700	Pleated Ear Loop Procedural Mask, 50/BX 10BX/CS
RS-810	White Cone Non-Rated Nuisance Level Dust Mask, 50/BX 20BX/CS
RS-500	Blue Cone Non-Rated Nuisance Level Dust Mask, 50/BX 20BX/CS
RS-700-BFE	Pleated Ear Loop Procedural Mask, Meets FF&BFE Standards, 50/BX 10BX/CS
RS-900-N95	Safety Zone Brand NIOSH Approved Respirator, 20/BX 12BX/CS
RS-920-EV-N95	Safety Zone Brand NIOSH Approved Respirator, Exhalation Valve, 10/BX 12BX/CS
RM-4200N95	Moldex® Brand NIOSH Approved AirWave Particulate Respirator, 10/BX 8BX/CS, MD/LG
RM-2200N95	Moldex® Brand NIOSH Approved Respirator, 20/BX 12BX/CS
RM-2300N95	Moldex® Brand NIOSH Approved Respirator, Exhalation Valve, 10/BX 10BX/CS
RM-8102	Moldex® Brand Pre-Assembled Half Mask Respirator, Organic Vapor Cartridge, Sold by the Each

RS-600



RS-700



RS-810



RS-500



RS-900-N95



RS-920-EV-N95



RM-4200N95



RM-2200N95



RM-2300N95



RM-8102



# HARD HATS & BUMP CAPS

NS-BC86010000	Honeywell White Vented Deluxe Bump Cap, HDPE Shell, Pinlock Suspension, Sold by the Each
NS-BC86070000	Honeywell Blue Vented Deluxe Bump Cap, HDPE Shell, Pinlock Suspension, Sold by the Each
NS-A59010000	Honeywell Peak White HDPE Shell Hard Hat, 4-PT Pinlock Suspension, Sold by the Each
NS-A59R010000	Honeywell Peak White HDPE Shell Hard Hat, 4-PT Ratchet Suspension, Sold by the Each
NS-A59020000	Honeywell Peak Yellow HDPE Shell Hard Hat, 4-PT Pinlock Suspension, Sold by the Each
NS-A59R020000	Honeywell Peak Yellow HDPE Shell Hard Hat, 4-PT Ratchet Suspension, Sold by the Each
NS-A59030000	Honeywell Peak Orange HDPE Shell Hard Hat, 4-PT Pinlock Suspension, Sold by the Each
NS-A59R030000	Honeywell Peak Orange HDPE Shell Hard Hat, 4-PT Ratchet Suspension, Sold by the Each
NS-A59040000	Honeywell Peak Green HDPE Shell Hard Hat, 4-PT Pinlock Suspension, Sold by the Each
NS-A59R040000	Honeywell Peak Green HDPE Shell Hard Hat, 4-PT Ratchet Suspension, Sold by the Each
NS-A59070000	Honeywell Peak Sky Blue HDPE Shell Hard Hat, 4-PT Pinlock Suspension, Sold by the Each
NS-A59R070000	Honeywell Peak Sky Blue HDPE Shell Hard Hat, 4-PT Ratchet Suspension, Sold by the Each

## PINLOCK SUSPENSION

## RATCHET SUSPENSION



NS-BC86010000

NS-BC86070000



NS-A59010000  
NS-A59R010000

NS-A59020000  
NS-A59R020000

NS-A59030000  
NS-A59R030000

NS-A59040000  
NS-A59R040000

NS-A59070000  
NS-A59R070000





# RAIN WEAR

<b>BSBK-(SIZE)</b>	<b>Black Slush Boots, Sold by the Pair, Sizes 7-17</b>
<b>BSYE-(SIZE)</b>	<b>Yellow Slush Boots, Sold by the Pair, Sizes 7-18</b>
<b>WP10-1P-RD</b>	<b>Red One Piece PVC Rain Poncho, Hood &amp; Side Snaps, Sold by the Each, 50/CS</b>
<b>W335-PP-(SIZE)</b>	<b>35 MIL Heavy Weight PVC/Polyester 3 Piece Yellow Rain Suit, Sold by the Each, SM-7X</b>
<b>WR35-PP-(SIZE)</b>	<b>35 MIL 48" Heavy Weight PVC/Polyester Full Length Yellow Raincoat, Sold by the Each, SM-4X</b>
<b>W310-1P-(SIZE)</b>	<b>10 MIL 3 Piece Yellow Rain Suit, Sold by the Each, SM-3X</b>

**BSBK-(SIZE)**



**BSYE-(SIZE)**



**WP10-1P-RD**



**W335-PP-(SIZE)**



**WR35-PP-(SIZE)**



# FIRST AID



K-FAK-10	10 Person Plastic First Aid Kit, Sold by the Each
K-FAK-25P	25 Person Plastic First Aid Kit, Sold by the Each
K-FAK-50P	50 Person Plastic First Aid Kit, Sold by the Each
K-FAK-25	25 Person Metal First Aid Kit, Sold by the Each
K-FAK-50	50 Person Metal First Aid Kit, Sold by the Each
K-FAK-100	100 Person Metal First Aid Cabinet, Sold by the Each
K-FAK-3060SZ	All-in-One Blood Borne Pathogen Spill Cleanup Kit, Sold by the Each
K-FAK-21-004	Cold Pack, Sold by the Each, 50/CS
K-FAK-2025SK/R	Refill Complete In Bag For K-FAK-25 & K-FAK-25P, Sold by the Each
K-FAK-2050SK/R	Refill Complete In Bag For K-FAK-50 & K-FAK-50P, Sold by the Each
K-FAK-24-000SZ	16 Oz. Wall Mount, Single Bottle Eye Wash Station, Sold by the Each
K-FAK-24-102SZ	16 Oz. Wall Mount, Double Bottle Eye Wash Station, Sold by the Each
K-FAK-24-101	16 Oz. Replacement Eye Wash Bottle Only, Sold by the Each
K-FAK-24-202SZ	32 Oz. Wall Mount, Single Bottle Eye Wash Station, Sold by the Each
K-FAK-24-201	32 Oz. Replacement Eye Wash Bottle Only, Sold by the Each

K-FAK-10



K-FAK-25P



K-FAK-50P



K-FAK-100



K-FAK-3060SZ



# EYEWASH



K-FAK-24-102SZ



K-FAK-24-000SZ



ALL KITS ARE ANSI APPROVED

## K-FAK-10

- (1X) Triangular Bandage
- (1X) Bandage Scissors
- (1X) Forceps
- (10X) Antiseptic Towelettes
- (6X) Burn Cream Packets
- (6X) Triple Antibiotic Packets
- (1X) 2" Gauze Bandage
- (16X) Plastic Adhesive Strips
- (2X) Fabric Fingertip Bandages
- (2X) Fabric Knuckle Bandages
- (4X) 3" X 3" Gauze Pads
- (1X) 1/2" Adhesive Tape
- (4X) Latex Exam Gloves
- (1X) Large Wound Pad
- (1X) First Aid Guide
- (1X) Plastic Case W/ O-Ring

## K-FAK-3060SZ

- (1X) Absorbant Spill Powder
- (1X) Red Biohazard Bag
- (1X) Clear Poly Bag
- (2X) Bag Ties
- (1X) Pair of Nitrile Gloves
- (10X) Paper Towels
- (1X) Germicidal Wipe
- (2X) Anti-Spetic Towelettes
- (1X) Spatula and Scoop
- (1X) Plastic Case W/ O-Ring

## K-FAK-25P

- (20X) Alcohol Antiseptic Wipes
- (6X) Antiseptic Towelettes
- (3X) Sting Relief Wipes
- (1X) Bandage Scissors
- (1X) Forceps
- (6X) Burn Cream Packets
- (6X) Triple Antibiotic Packets
- (1X) Instant Cold Pack
- (1X) Triangular Bandage
- (32X) Plastic Adhesive Strips
- (2X) Fabric Fingertip Bandages
- (2X) Fabric Knuckle Bandages
- (5X) 3" X 3" Gauze pads
- (1X) 4" Gauze Pad
- (1X) Large Wound Pad
- (1X) 1/2" Adhesive Tape
- (4X) Latex Exam Gloves
- (1X) 1 Fl Oz Eye Wash Solution
- (1X) First Aid Guide
- (1X) Plastic Case W/ O-Ring

## K-FAK-50P

- (20X) Alcohol Antiseptic Wipes
- (15X) Antiseptic Towelettes
- (3X) Sting Relief Wipes
- (4X) PVP Iodine Wipes
- (1X) Bandage Scissors
- (1X) Forceps
- (12X) Burn Cream Packets
- (12X) Triple Antibiotic Packets
- (1X) 2" Elastic Bandage
- (1X) 2" Gauze Bandage
- (1X) 4" Gauze Bandage
- (1X) 1/2" Adhesive Tape
- (10X) Fabric Fingertip Bandages
- (10X) Fabric Knuckle Bandages
- (60X) Plastic Adhesive Strips
- (1X) Instant Cold Pack
- (1X) Triangular Bandages
- (5X) 3" X 3" Gauze Pads
- (4X) Latex Exam Gloves
- (1X) Large Wound Pad
- (1X) First Aid Guide
- (1X) Plastic Case W/ O-Ring

## K-FAK-100

- (100X) Alcohol Antiseptic Wipes
- (2X) 5" X 9" Abdominal Pad
- (10X) 4" X 4" Gauze Pads
- (2X) Gauze Bandage
- (2X) 1/2" Adhesive Tape
- (4X) Sterile Eye Pads with Tape Strips
- (4X) Nitrile Exam Gloves
- (10X) Latex Exam Gloves
- (2X) Instant Cold Packs
- (50X) Extra Strength Non-Aspirin Tylenol
- (1X) Bandage Scissors
- (1X) Forceps
- (2X) Triangular Bandages
- (200X) 1" X 3" Plastic Adhesive Strips
- (15X) 2" X 3" Extra Large Bandages
- (15X) Knuckle Bandages
- (15X) Fingertip Bandages
- (10X) Sting Relief Wipes
- (25X) Burn Cream Packets
- (1X) 4 Fl Oz Eye Wash Solution
- (1X) 4 Fl Oz Burn Spray
- (1X) 2" Elastic Bandage
- (1X) 4" Elastic Bandage
- (1X) First Aid Guide
- (1X) Metal Cabinet



# MISC. PRODUCTS

D-100	Wall Mount Wire Rack for 50 & 100 Pack Disposable Gloves, Sold by the Each
D-100PE	Wall Mount Wire Rack for 100 Pack Polyethylene Gloves, Sold by the Each
D-100DAP	Wall Mount Wire Rack for DAP10 Aprons, Sold by the Each
PW-18-4R80-H	18" Wide Hand Pallet Wrap, 1500Ft/Roll 4Rolls/CS
Z-BACKSUP-(SIZE)	Back Support, Detachable Suspenders, Sold By The Each, XS-4X
TSC-250E	Standard Paper Toilet Seat Covers, 250BX 20BX/CS
TRASH CAN LINERS	We Stock Many Sizes And Thicknesses of High & Low Density Liners. (Please Call For Sizes And Pricing)

D-100



D-100PE



D-100DAP



PW-18-4R80-H



Z-BACKSUP-(SIZE)



TSC-250E



TRASH CAN LINERS



# WHOLESALE LINES

## Honeywell

**uvex**

(EYE PROTECTION)

**HOWARD  
LEIGHT** 

(HEARING  
PROTECTION)

**fend·all**

(EYE WASH STATIONS)

**NORTH**

Safety Products

**MILLER**  
Fall Protection

**DUPONT**

**Tyvek**<sup>®</sup>

(DISPOSABLE APPAREL)

**MOLDEX**<sup>®</sup>

(HEARING &  
RESPIRATORY PROTECTION)



**JUSTRITE**<sup>®</sup>

(SAFETY CANS & CABINETS)

**SQUINCHER**  
FOR PEAK PERFORMANCE

(ELECTROLYTE DRINKS)

**CREWS**  
INC.

(EYE PROTECTION)

**BAUSCH  
& LOMB**

(LENS CLEANING STATIONS)



Suggested	<span style="color: green;">■</span>
Limited Use	<span style="color: orange;">■</span>
Inadequate	<span style="color: red;">■</span>
Not rated	<span style="color: black;">■</span>

# Chemical Resistance Chart

This chemical chart is for reference use only. We recommend on-site testing of all gloves and provide free samples to determine safe usage.



	Latex	Nitrile	Vinyl
Acetaldehyde, 99.5%	Green	Green	Red
Acetic Acid	Green	Green	Green
Acetone, 99.5%	Green	Red	Red
Acetonitrile, 99%	Green	Green	Red
Acrylic Acid, 99%	Green	Orange	Black
Acrylonitrile	Green	Green	Orange
Ammonium Fluoride, 40%	Green	Green	Green
Ammonium Hydroxide, 85%	Green	Red	Green
Amyl Acetate, 100%	Red	Green	Orange
Amyl Alcohol, 99%	Green	Green	Orange
Aniline, 99%	Orange	Red	Orange
Animal Fats	Red	Green	Green
Aqua Regia	Red	Green	Green
Battery Acid	Green	Green	Green
Benzaldehyde, 99.5%	Orange	Red	Red
Benzene	Red	Green	Orange
Benzyl Chloride	Orange	Green	Red
Bromine	Green	Black	Green
Bromopropionic Acid, Sat	Green	Green	Black
Butane	Red	Green	Red
2-Butoxyethanol	Black	Green	Black
Butyl Acetate, 99%	Red	Orange	Red
Butyl Alcohol, 99%	Green	Green	Green
Butyl Cellosolve, 99%	Green	Green	Red
Butyrolactone, 99%	Green	Red	Black
Calcium Hypochlorite	Red	Green	Green
Carbolic Acid	Red	Red	Green
Carbon Dichloride	Black	Green	Black
Carbon Disulfide, 99.9%	Red	Orange	Red
Carbon Tetrachloride, 99%	Red	Green	Orange
Castor Oil	Green	Green	Green
Cellosolve Acetate, 99%	Green	Green	Red
Cellosolve Solvent	Green	Green	Black
Chlorine	Green	Green	Green
Chloroacetone	Orange	Black	Red
Chlorobenzene	Green	Green	Orange
Chloroform	Red	Green	Red
Chloronaphthalenes	Black	Orange	Black
Chlorothene YG	Black	Orange	Red
Chromic Acid, 50%	Red	Orange	Green
Citric Acid, 10%	Green	Green	Green
Cottonseed Oil	Red	Green	Green
Creosol	Red	Green	Orange
Cunene	Black	Green	Black
Cutting Oil	Orange	Green	Red
Cyclohexane	Red	Green	Red
Cyclohexanol, 98%	Green	Green	Green
Diacetone Alcohol, 99%	Orange	Green	Orange
Dibutyl Phthalate, 99%	Orange	Green	Red
Diamine	Black	Green	Black
Diethylamine, 99%	Red	Orange	Red
Diethyl Ether	Orange	Green	Red
Di-Isobutyl Ketone, 80%	Orange	Green	Green
Dimethyl Acetamide, 99%	Orange	Red	Black
N,N-Dimethyl Formamide, 99%	Green	Red	Red
Dimethyl Sulfoxide, 99%	Green	Green	Red
Diethyl Phthalate, 99%	Orange	Green	Black
1,4-Dioxane, 99.9%	Orange	Red	Orange
Epichlorohydrin, 99%	Orange	Red	Black
Ethanol	Black	Green	Black
2-Ethoxyethanol	Black	Green	Black
Ethyl Acetate, 99%	Orange	Red	Red
Ethyl Alcohol, 90%	Green	Green	Orange
Ethyl Ether, 99%	Orange	Green	Green
Ethylene Dichloride	Red	Green	Red
Ethylene Glycol, 99%	Green	Green	Green
Ethyl Glycol Ether, 99%	Orange	Orange	Black
Ethylene Trichloride	Red	Red	Black
Fluorine	Green	Black	Green
Formaldehyde, 99%	Green	Green	Green
Formalin Solution	Black	Green	Black
Formic Acid, 95%	Green	Orange	Green
Freon TF, 99%	Red	Orange	Orange
Furfural, 99%	Green	Red	Red
Gasoline, 100%	Red	Green	Orange
Glutaraldehyde, 25%	Red	Green	Orange
Glycerine	Green	Green	Green
Glycerol	Green	Green	Green
Heptane	Black	Green	Black
Hexamethyldisilazine, 97%	Green	Green	Black
Hexane, 99%	Red	Green	Red
Hydraulic Fluid-Petrol Based	Red	Green	Green
Hydraulic Fluid-Ester Based	Red	Red	Red
Hydrazine, 65%	Red	Green	Green

	Latex	Nitrile	Vinyl
Hydrochloric Acid, 38%	Green	Green	Green
Hydrofluoric Acid, 48%	Green	Green	Green
Hydrogen Peroxide, 30%	Green	Green	Green
Hydroquinone	Green	Green	Green
Hypophosphorus Acid, 50%	Orange	Red	Red
Iodine	Green	Green	Green
Isobutyl Alcohol, 99%	Green	Green	Green
Iso-Octane, 99%	Orange	Green	Red
Isopropanol	Black	Green	Black
Isopropyl Alcohol, 99%	Orange	Green	Green
Isopropyl Benzene	Black	Green	Black
Kerosene, 100%	Green	Green	Red
Lactic Acid, 85%	Green	Green	Green
Lauric Acid, 36%	Green	Green	Orange
Linoleic Acid	Red	Green	Green
Linseed Oil	Red	Green	Green
Maleic Acid, 100%	Green	Green	Green
Methanol	Black	Green	Black
Methyl Acetate	Red	Red	Black
Methyl Alcohol, 99.9%	Green	Green	Green
Methylamine, 40%	Green	Green	Green
Methyl-Butyl Ether, 99.8%	Red	Green	Black
Methyl Cellosolve, 99%	Orange	Orange	Red
Methylamine	Green	Green	Green
Methyl Chloride	Red	Red	Red
Methylene Chloride	Orange	Green	Orange
Methyl Ethyl Ketone, 99%	Orange	Red	Red
Methyl Isobutyl Ketone	Orange	Red	Black
Methyl Methacrylate	Red	Red	Black
Methyl-T-Butyl Ether	Black	Green	Black
Mineral Oil	Red	Green	Orange
Mineral Spirits, 100%	Red	Green	Red
Monoethanolamine, 99%	Orange	Green	Green
Morpholine, 99%	Orange	Red	Orange
Muriatic Acid, 100%	Green	Green	Green
Naphtha VM&P, 100%	Red	Green	Red
N-Methyl-2 Pyrrolidone, 99%	Orange	Red	Black
Naphthalene	Green	Green	Green
Nitric Acid, 10%	Green	Green	Green
Nitric Acid, 70%	Red	Red	Orange
Nitrobenzene, 99%	Orange	Red	Red
Nitromethane, 95.5%	Green	Red	Red
Nitropropane, 95.5%	Green	Red	Black
Octyl Alcohol, 99%	Green	Green	Green
Oleic Acid, 99%	Green	Green	Green
Oxalic Acid, 12.5%	Green	Green	Green
Paint Remover	Orange	Green	Red
Palmitic Acid, Sat.	Green	Green	Green
Pentachlorophenol, 35%	Red	Green	Black
Pentane, 98%	Red	Green	Green
Perchloric Acid, 60%	Orange	Orange	Green
Perchloroethylene	Black	Green	Black
Perholfteum Ether	Black	Green	Black
Phenol, 90%	Green	Red	Green
Phosphoric Acid, 85%	Green	Green	Green
Picric Acid	Green	Green	Green
Potassium Hydroxide, 50%	Green	Green	Green
Printing Ink	Green	Green	Orange
Propyl Acetate, 99%	Red	Orange	Red
Propyl Alcohol, 96%	Green	Green	Orange
Propylene Oxide	Red	Black	Black
Pyridine, 99%	Orange	Red	Black
Rubber Solvent, 100%	Red	Green	Red
Rule Solvent	Black	Green	Black
Sodium Hydroxide, 50%	Green	Green	Green
Sodium Hypochlorite	Green	Orange	Green
Stoddard Solvent, 99%	Red	Red	Green
Styrene	Green	Orange	Green
Sulfuric Acid, 95%	Green	Orange	Green
Tannic Acid, 37.5%	Green	Green	Green
1,1,2,2-Tetrachloroethane, 99%	Red	Red	Black
Tetrachloroethylene, 100%	Red	Red	Green
Toluene, 99%	Red	Red	Orange
Toluene Di-Isocyanate	Red	Black	Red
1,1,1-Trichloroethane, 99%	Red	Red	Black
Trichloroethylene	Red	Green	Orange
Tricresyl Phosphate, 90%	Red	Green	Orange
Triethanolamine, 85%	Orange	Green	Green
Tung Oil	Black	Green	Orange
Turbine Oil	Red	Green	Orange
Turpentine, 100%	Red	Green	Red
Vegetable Oil	Red	Green	Orange
Vinyl Acetate	Red	Orange	Red
Xylene	Red	Orange	Red

**Established in 1973, The Safety Zone sells through authorized distribution only and never direct to end users.**



**● WORLDWIDE HEADQUARTERS**

Guilford, CT

**● NORTH AMERICAN DISTRIBUTION CENTERS**

Richmond, IN

Cerritos, CA

Houston, TX

Pompano Beach, FL

Kent, WA

Thomasville, NC

Fergus, ON Canada

**THE SAFETY ZONE, LLC**

385 Long Hill Road | PO Box 449 | Guilford, CT 06437

t: 800.821.5702 | f: 800.783.2987 | [safetyzone.com](http://safetyzone.com)





the SAFETY  
ZONE<sup>®</sup>