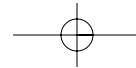
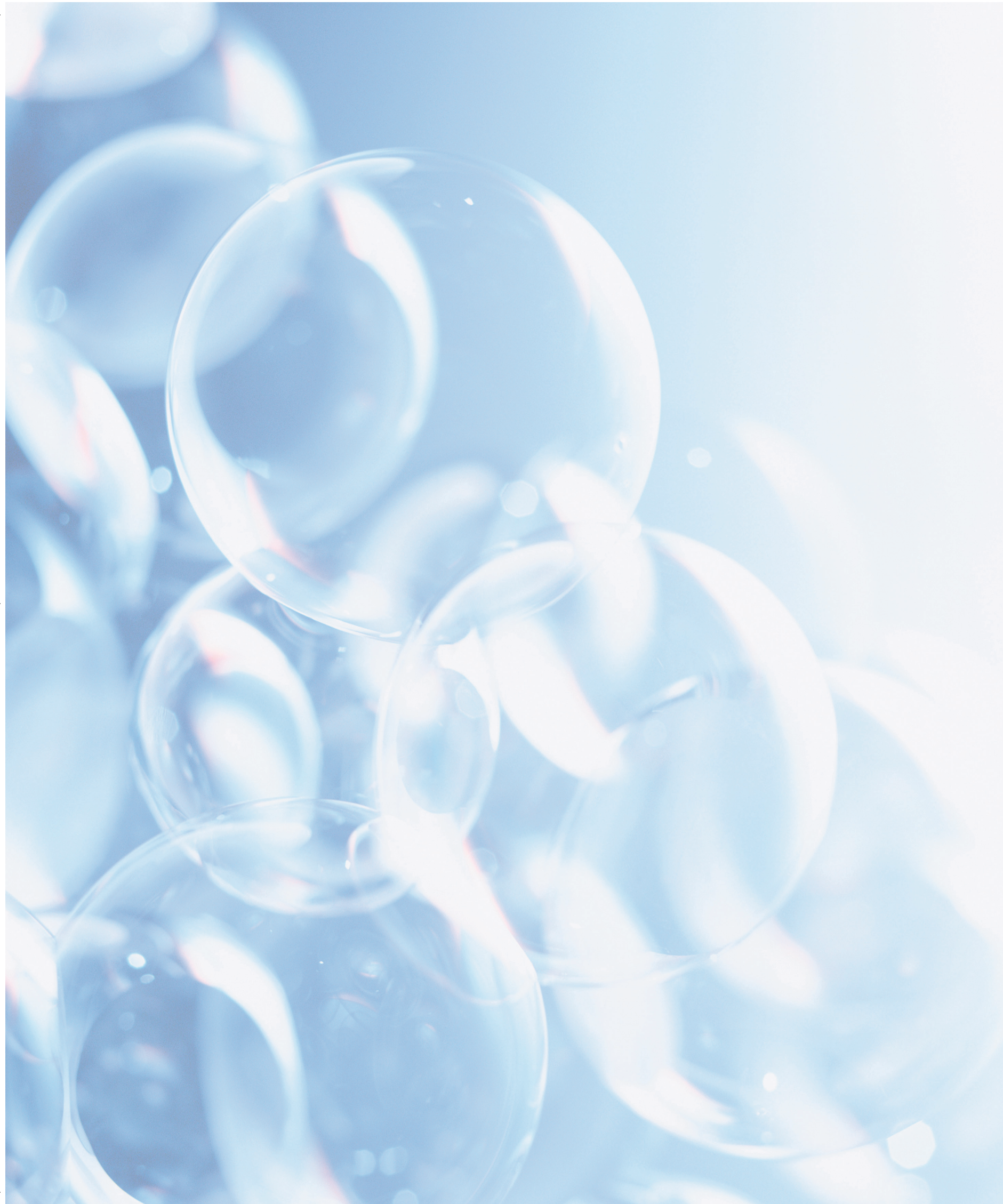


PETRA
PETRA
premium care for skin and hair

Petra Hygienic Systems International Ltd · Manufacturers & Distributors of Quality Body Care Products
phone: 1 800 463 2516 · fax: 1 888 329 7387 · e-mail: info@petrasoap.com · www.petrasoap.com

premium care for skin and hair





Petra Hygienic Systems is a leading manufacturer and distributor of premium body care products throughout North America. Since 1988 we have focused on working with health and fitness facilities as well as golf and country clubs and have become the industry's premier supplier of locker room amenities.

Petra is uniquely positioned to provide you with prompt service regardless of your location. Distribution centers, sales offices and manufacturing facilities located across the U.S. and Canada are all part of what Petra offers to accommodate your needs.

Enjoy our catalogue. Should you have any questions, comments or other needs, please call us. We look forward to assisting you as we are confident Petra can make a difference your members and guests will appreciate.



BODY REVIVE™

The Body Revive Personal Care Line provides you with salon quality products comparable to national brands at unbelievable prices. Body Revive is our most comprehensive group of products. Each is formulated to help revitalize and refresh your skin and hair for the most complete after-workout experience. All Body Revive products contain a blend of Natural Botanical Extracts such as Camphrey, Yarrow, Meadow Sweet, Burdock, Passion Flower, Rose, Lavender and most importantly 100% pure Aloe Vera, which is renowned for its positive effect on the health of hair and skin.

Body Revive products also contain Jojoba Oil which promotes luxuriant hair growth, helps reduce dandruff and leaves skin with a lustrous velvety bloom. Jojoba is also an excellent skin and hair conditioner. Through careful research in the formulation of our Body Revive products, Petra has taken advantage of Aloe Vera's and Jojoba's unique properties and benefits and we have incorporated them into all the products in the Body Care Personal Care Line.

All Petra body care products are formulated using the best quality natural ingredients derived solely from vegetable and mineral sources. They are also fully biodegradable and hypoallergenic and are never tested on animals.



Petra takes great pride in using the finest ingredients to produce all our body care products.

ATHLETICARE™

As the name implies, the Athleticare product line was developed specifically for the athletic person who needs special care for their skin and hair due to the strains that regular workouts place on an individual. Athleticare products contain naturally derived ingredients and no harsh detergents or chemicals. We have worked with athletes and club members to ensure our Athleticare products are the finest products in their class.

Spa Soap

Spa Soap is a premium line of skin and hair care products at a budget price. They contain all the same natural raw materials as our Body Revive and Athleticare products with the exception of the Natural Botanical Extracts, providing performance and an excellent value. Perfect for use in every facility where members demand quality products but budget factors are a consideration. Spa Soap products available: Shampoo, Body Wash, Shampoo & Body Wash Combo and Hand Soap.

JENTLE®



Petra has all the products to meet the needs of your members and guests as well as your budget.

Gentle with a "J"! Jentle products were originally designed for professional sports teams and the long term health care industry. They are now available and ideally suited for your locker room amenity program.

Jentle products are formulated to replenish and replace the skin's natural emollients using only natural ingredients that are incredibly mild. This makes the complete line perfect for those who have multiple showers or baths each day.

In addition to gallons and drums, the Jentle line is available in smaller, personal sized containers. This option can give you the flexibility to make them available at point of use throughout your facility.



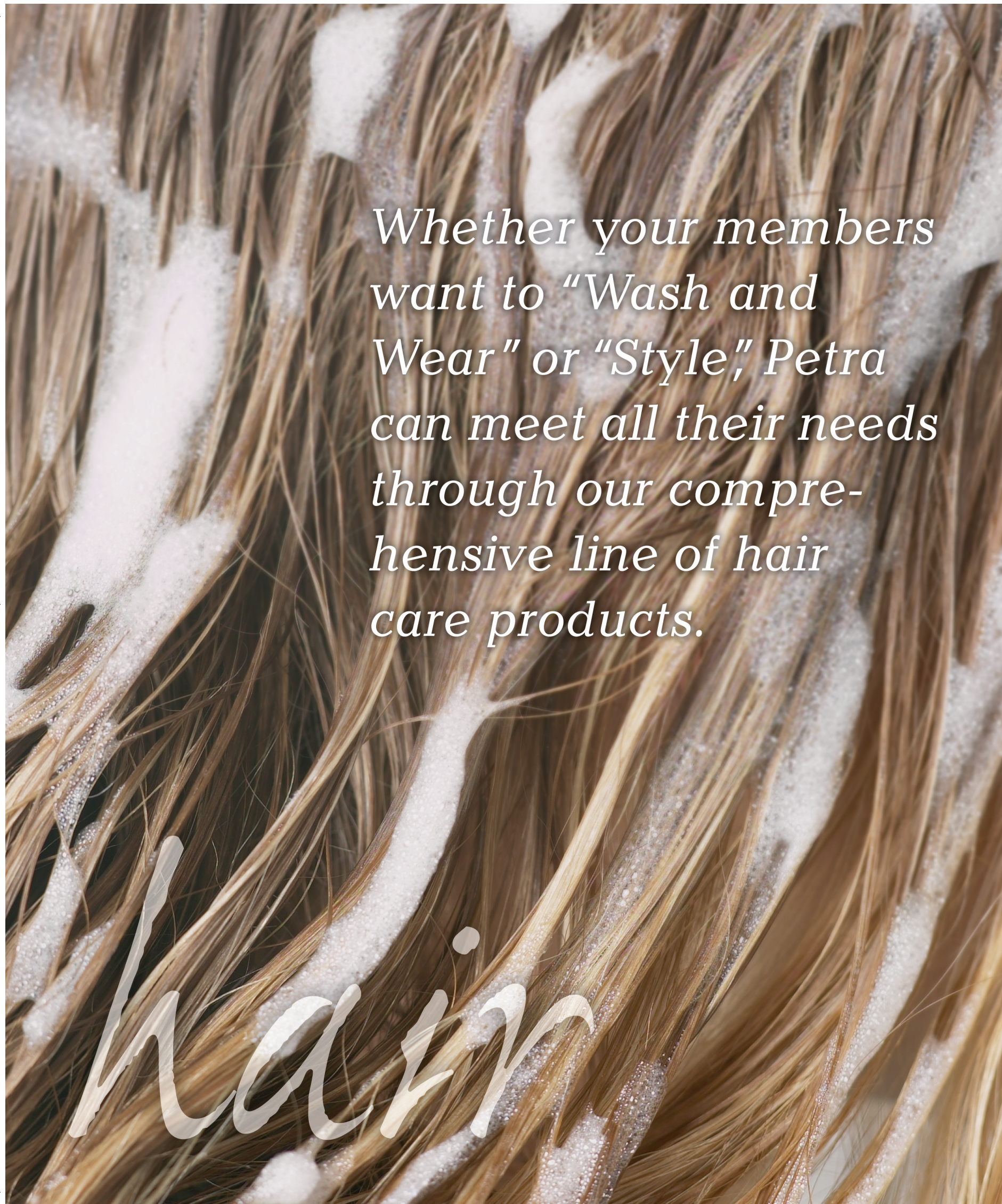
1 Gallon

30 Gallons



5 Gallons, Super Concentrates only.

All Body Revive, Athleticare, Spa Soap and Jentle products are available in cases of 4 gallons and 30 gallon drums. 55 gallon drums are also available upon special request.



Whether your members want to "Wash and Wear" or "Style," Petra can meet all their needs through our comprehensive line of hair care products.

Shampoos

- Body Revive** Protein Enriched Shampoo with Aloe Vera [BR 100] ALSO AVAILABLE IN CONCENTRATE: BR 100C
 - Body Revive** Nettle & Thyme Shampoo [BR 125-A]
 - Body Revive** After-Swim Shampoo, "Get the Chlorine Out" [BR 150]
 - Body Revive** Petra Plus Shampoo & Conditioner in One [BR 250]
 - Athleticare** Shampoo [AC 100]
 - Spa Soap** Shampoo [EC 100]
- See also combo products, page 6 and Super Concentrates, page 13.

Conditioners

- Body Revive** Protein Enriched Conditioner with Aloe Vera [BR 200]
- Athleticare** Conditioner [AC 200] ALSO AVAILABLE IN PINK: AC 200-P

Petra products are mildly fragranced to ensure universal appeal.



Hair Sprays, Gels, Mousse and Tonics

- Body Revive** Super Hold Hair Spray [BR 800]
- Clubman** Grooming Hair Spray, aerosol, 11 oz. [CM 27571]
- Clubman** Supreme Hair Spray, aerosol, 11 oz. [CM 27581]
- Clubman** Supreme Hair Spray, non-aerosol, 8 oz. [CM 27450]
- Clubman** Hair Spray, non-aerosol, 8 oz. [CM 27400]
- Finesse** Hair Spray Extra Hold, aerosol [MC 6007]
- White Rain** Hair Spray Regular [MC 6010]
- Alberto** VO5 Hair Spray Extra Hold, aerosol [MC 6012]
- Dry Look** Hair Spray Extra Hold, aerosol [MC 6013]
- Dry Look** Hair Spray Regular, aerosol [MC 6013-A]
- Body Revive** Styling Hair Gel [BR 850]
- Clubman** Styling Hair Gel, 16 oz. jars [CM 27920]
- Clubman** Styling Hair Gel, 3.75 oz. tubes [CM 27940]
- Alberto** European Extra Hold Mousse [MC 6011]
- Vitalis** Hair Tonic [MC 6014]
- Clubman** Eau de Portugal Hair Tonic, 13 oz. [CM 27130]
- Wild Root** Hair Dressing [MC 6009]

Combs, Brushes, and Accessories

- 7" Black Combs, 144/case [MC 5025]
- 7" Premium Black Combs, 144/case [MC 5026]
- Ladies Long-tailed Combs, 144/case [MC 5005]
- Ladies Brushes, vented, 12/case [MC 5010]
- Marvicide** Disinfectant for Brushes and Combs, concentrated [MC 8000]
- Marvicide** Acrylic Disinfectant Jar, 40 oz. [MC 8010]
- Petracide** Comb and Brush Disinfectant, case of 4 gallons [MC 8005]

Hair Dryers and Curling Irons

- Helen of Troy** Hair Dryer, hand held, 1600 w [HT 6097N]
- Andis** Pro Turbo Hair Dryer, hand held, 1600 w [MC 1054]
- Aliseo** Typhoon Wall Mount Hair Dryer [MC 3006]
- Oster** Wall Mount Hair Dryer [HT 608]
- Helen of Troy** 3/4" Curling Iron [HT 6097]

Many other models of dryers and irons are available, please inquire.



Petra is constantly expanding our product line to better serve our customers. If you don't see what you need, please call us.



The colors of our products make them easy to identify for members and staff alike.

Body Washes & Combo Products

- Body Revive** Revitalizing Body Wash with Aloe Vera [BR 300] ALSO AVAILABLE IN CONCENTRATE: BR 300C
- Body Revive** White Aloe and Green Tea Body Wash [BR 325-A]
- Body Revive** Hair & Body Combo [BR 350] ALSO AVAILABLE IN CONCENTRATE: BR 350C
- Athleticare** Body Wash [AC 300]
- Athleticare** Hair & Body Combo [AC 400]
- Spa Soap** Body Wash [EC 200]
- Spa Soap** Hair & Body Combo [EC 300]
- Jentle** Blue Hair & Body Shampoo [JT 100]
- Spa Soap** Clear Hair & Body Combo [JT 360]

See also Super Concentrates, page 13.

Hand Soaps & Sanitizers

- Athleticare** Hand Soap [AC 500]
- Spa Soap** Hand Soap [EC 500]
- Jentle** Antimicrobial Hand Soap [JT 500]
- Athleticare** Antibacterial Hand Soap [AC 550]
- Body Revive** Foaming Soap [BR 360F] For use with foaming soap dispensers only, page 15
- Athleticare** Foaming Soap [AC 410F] For use with foaming soap dispensers only, page 15
- Athleticare** Foaming Antibacterial Hand Soap [AC 560F] For use with foaming soap dispensers only, page 15
- Athleticare** Waterless Hand Sanitizing Gel [AC 575]
- Athleticare** Waterless Hand Sanitizing Gel, 4 oz. [AC 580]

See also Super Concentrates, page 13.

Lotions & Sunscreen

- Body Revive** Derma Soft Hand & Body Lotion [BR 600]
- Athleticare** Hand & Body Lotion [AC 600]
- Jentle** Moistural Hand & Body Lotion [JT 600]
- Jentle** Moistural Hand & Body Lotion, 4 oz. [JT 600-4]
- Jentle** Moistural Hand & Body Lotion, 16 oz. disc top [JT 600-16-D]
- Jentle** Moistural Hand & Body Lotion, 16 oz. pump top [JT 600-16-P]
- Vaseline** Intensive Care, 22 oz. [MC 6040]
- Vaseline** Intensive Care, 7 oz. [MC 6041]
- Body Revive** Sunscreen, SPF 30, gallon [BR 950]

Talcs & Powders

- Clubman** Bath Talc, 9 oz. [CM 27702]
- Clubman** White Talc, 9 oz. [CM 27600]
- Clubman** Flesh Talc, 9 oz. [CM 27650]
- Clubman** Shave Talc, Flesh, 4 oz. [CM 27701]
- Johnson & Johnson** Baby Powder, 8 oz. [MC 6020]
- Johnson & Johnson** Baby Powder, 22 oz. [MC 6025]

Caring for the skin should involve more than soap and water. Using the right body wash and after shower products can make the difference between a shower and an experience.

hand & body

*Gels, creams, razors,
balms, lotions, splashes...
the list may seem endless.
Let Petra ensure that
you and your members
have what they need for
their shaving experience.*

shaving

Shave Creams & Gels

- Body Revive** Derma Care Shave Cream [BR 400]
- Body Revive** Foaming Shave Gel [BR 450]
- Clubman** Shave Cream, 12 oz. [CM 27550]
- Gillette** Foamy Shave Cream, Regular [MC 6030]
- Gillette** Foamy Shave Cream, Sensitive [MC 6035]
- Noxema** Shave Cream, Sensitive [MC 6036]
- Skintimates** Ladies Shave Gel, Sensitive [MC 6037]
- Edge** Shave Gel [MC 6045]
- Barbasol** Original Shave Cream [MC 6029]
- Campbell's** Shave Cream for Campbell's Dispenser only [MC 6038]
- Campbell's** Hot Shave Cream Dispenser [MC 1005]
- Campbell's** Dispenser Cleaner [MC 6038-A]

After Shave Lotions & Balms

- Body Revive** Aloe & Herbal After Shave Balm [BR 500]
- Body Revive** After Shave Splash [BR 525]
- Clubman** After Shave Lotion, 6 oz. [CM 40300]
- Clubman** After Shave Lotion, 12.5 oz. [CM 40320]
- Clubman** Classic Vanilla After Shave Lotion, 6 oz. [CM 11252]
- Clubman** Musk After Shave Lotion, 6 oz. [CM 40500]
- Clubman** Lilac Vegetal After Shave Lotion, 12 oz. [CM 25910]
- Clubman** After Shave Balm, 4 oz. [CM 40360]
- Clubman** Special Reserve Cologne, 6 oz. [CM 40720]
- Clubman** Eau de Quinine Regular [CM 27120]
- Clubman** Lime Sec Cologne, 12.5 oz. [CM 40180]
- Clubman** Citrus Musk Cologne, 12.5 oz. [CM 40190]
- Clubman** Bay Rum Cologne, 12 oz. [CM 40210]
- Mennen** Skin Bracer Regular [MC 6015]

- Mennen** Skin Bracer Classic [MC 6015-C]
- Aqua Velva** After Shave Ice Sport [MC 6016]
- Aqua Velva** After Shave Classic Ice Blue [MC 6016-A]
- Aqua Velva** After Shave Classic Ice Blue, plastic bottle [MC 6016-AP]
- Williams** Letric Shave Regular [MC 6017]
- Brut** After Shave Splash [MC 6018]
- Gillette** Series Artic Ice After Shave Gel [MC 6031]
- Old Spice** After Shave Splash [MC 6027]
- Lucky Tiger** After Shave [MC 6022]
- Gabel's** Bay Rum After Shave, pints [MC 6060], gallons [MC 6061]

Razors & Razor Dispensers

- Wilkinson** II, 200/case [MC 3005]
- Gillette** Good News Plus, 120/case [MC 3010]
- Gillette** Daisy Plus, 120/case [MC 3010-A]
- Personna** w/lube strip, 500/case [MC 3015]
- Personna** w/lube strip, 2000/case in the U.S., 1400/case in Canada [MC 3016]
- Personna** Men's Premium, 1152/case [MC 3017]
- Personna** Women's Premium, 1152/case [MC 3017-A]
- BIC** Twin Sensitive Plus, 120/case [MC 3016]
- BIC** Twin Select, 720/case [MC 3020]
- Acrylic Wall Mount Razor Dispenser [MC 3004]



Name brand and bulk amenity items allow you to customize the presentation in your locker room.

products



Sometimes it's the small things that make the difference to your members. Are you doing the small things?

Deodorants & Antiperspirants

- Body Revive** Body Fresh Antiperspirant [BR 700]
- Body Revive** Body Fresh Deodorant [BR 750]
- Right Guard** Sport Antiperspirant, scented [MC 6000]
- Right Guard** Sport Deodorant, scented [MC 6001]
- Right Guard** Sport Antiperspirant, unscented [MC 6002]
- Soft & Dry** Soft Scent Antiperspirant [MC 6005]
- Soft & Dry** Baby Powder Scent Antiperspirant [MC 6005-B]
- Secret** Antiperspirant, regular [MC 6006]
- Secret** Antiperspirant, unscented [MC 6006-A]
- Clubman** Deodorant/Antiperspirant, aerosol, 4 oz. [CM 27801]
- Clubman** Supreme Deodorant/Antiperspirant, non-aerosol, 4 oz. [CM 27750]

Foot Care

- Hy • Step** Foot Sprayer [MCHS 700]
- Hy • Spray** Antifungal Foot Spray [MGFS 700]
- Tinactin** Liquid Foot Spray [MC 6021]
- Dr. Scholl's** Foot Powder [MC 6019-A]

Mouthwashes, etc.

- Body Revive** Peppermint Mouthwash [BR 900]
- Protexin** Concentrated Mouthwash, 12 x 2 oz./case [MC 0306]
- Scope** Mouthwash Regular, Green, 6/case [MC 6050]
- Scope** Mouthwash Peppermint, Blue, 6/case [MC 6055]

For mouthwash cups and cup dispensers, call you Petra rep.

Steam & Sauna Products

- Eucalyptus** Oil, 100% pure, gallon [MC 3055-A]
- Eucalyptus** Blended Inhalant Fragrance, 4 gallons/case [MC 3055], 5 gallon pail [MC 3005-P]
- Eucamate** Eucalyptus Evaporator [MC 3056]

Cotton Products

- Cotton Swabs, 24 packs of 500/case [MC 4000]
- Cotton Balls, Jumbo, 48 packs of 500/case [MC 4005]
- Cotton Rounds, 24 packs of 80/case [MC 4000-R]
- Acrylic Jars with Lids, perfect for cotton swabs, cotton balls and other counter top items.*
- 3" x 3.5" [MC 4006], 5" x 5" [MC 4000-H], 6" x 6" [MC 4005-H]

Accessories & Other Necessities

- Wet Bags, 4 rolls/case [MC 4010]
- Wet Bag Roll Holder [MC 4012]
- Shower Caps, plastic, 100/case [MC 4007]
- Paper Slippers, 1000/case [MC 7100]
- Suitmate Swim Suit Dryer [SM 6000]
- Body Revive** Sunscreen, SPF 30, gallon [BR 950]

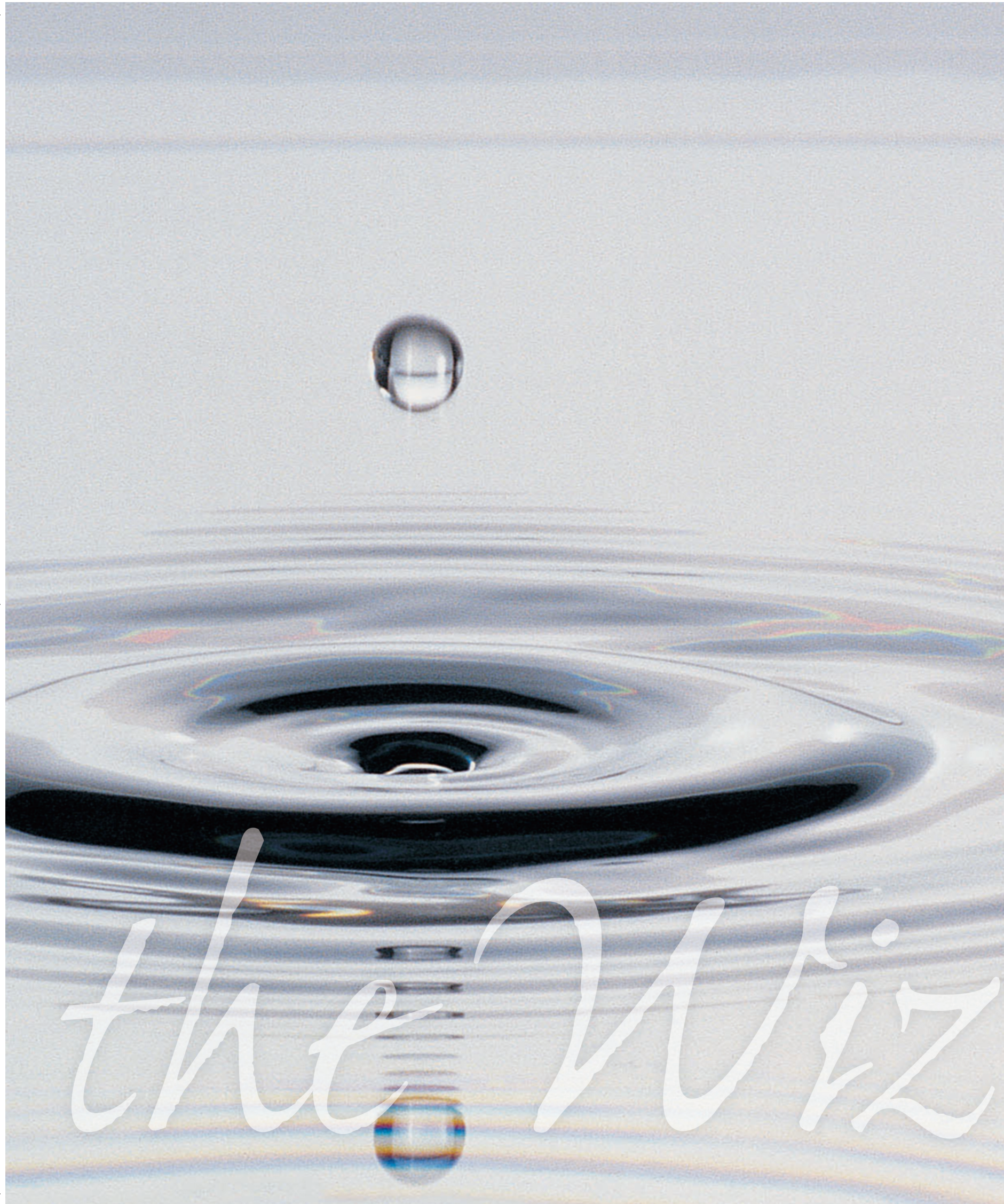
Cups

Petra carries a full range of cups for all your needs. Name brands such as Solo and Dixie can make dispensing water, mouthwash or coffee more convenient for your members.

Petra has something for everyone and every body. To make your members' visit to the locker room complete, offer them Petra's Personal Hygiene products.

Personal

Hygiene



Soap Made Easy

Just push the button on the Wizard II Soap Station and you are ready to use our premium body wash, shampoo or hand soap.

Petra's Super Concentrates provide excellent body and hair cleansing performance while being mild enough to use multiple times daily. They are available in a variety of popular colors and fragrances while The Wizard II Soap Station can customize the product to a desired richness and thickness.

The Wizard II is a wall mounted, unit similar to a chemical station. In fact, for convenience, it can be linked to an existing chemical station or directly to your water source.

Wizard Soap Stations are available in a number of configurations to best suit your needs including a two button unit for multi-product mixing.

Save time, save space and save money with Petra's Super Concentrates and the Wizard II Soap Station.

The Wizard II Soap Station

- Wizard II** Hybrid Mixing Device [WZ 300]
- Wizard II** Two Button Hybrid Mixing Device [WZ 400]
- Wizard II** E-Gap Mixing Device [WZ 200]

Super Concentrates

- Petra** Pear-Vanilla Super Concentrate [BR 365SC]
- Petra** Piña Colada Super Concentrate [BR 375SC]
- Petra** Melon Super Concentrate [BR 385SC]
- Petra** Citrus Super Concentrate [BR 395SC]
- Petra** Antimicrobial Hand Soap Super Concentrate [BR 370SC]
- Petra** Foaming Piña Colada Super Concentrate [BR 375SC-F]

Soap and savings at the push of a button.



To meet the demands of every amenity program and every type of application, we offer a wide variety of dispensers. Consult with your Petra representative to find what suits you best.

Customize your Petra dispensers with colored tops



Complete Top Pump Petra Dispenser [PD 100T]



Complete Spray Dispenser For hairspray or deodorant [PD 100S]

Petra Dispensers

Petra dispensers are made specifically to dispense all our products in any location. Their versatility allows you have an amenity presentation which is consistent whether it's in the showers, the vanity area or any other location throughout your facility.

- Each Petra dispenser is made of high density plastic which is durable and easy to clean
- The dispensers may be mounted as a single unit or a series of 2, 3, 4, etc.
- Replacement parts are readily available
- Specifically designed to meet the needs of your members, guests & staff
- Call your Petra rep for details about our "Free Dispenser Program"

Customizing

You can easily reinforce the image of your club by having your Petra dispenser customized with your logo. A variety of colored tops are also available should you want to enhance the dispensers to match your locker room décor.

More Dispensers

In addition to the Petra dispensers, we offer a wide variety of other dispenser that may better suit your specific needs.

Each is unique and each may have their place and purpose in your facility. Your Petra rep can assist you through the details and help you choose the system that will best meet your needs and expectations.

Other dispensers are also available upon request.

Aviva Dispenser
Available as single, double or triple units in a wide variety of colors and finishes. Each refillable chamber is 10 oz.
[MC 2132] DOUBLE CHROME SHOWN



Petra Bulk Dispenser
Available in 400 ml [MC 1040] and 800 ml [MC 1050] refillable reservoirs



Petra "Wide Mouth" Dispensers Available as single, double, triple, etc. units, each bottle is 32 oz.
[PD 100-B32W3] TRIPLE SHOWN



Petra Foam Soap Bulk Dispenser For use with Petra Foaming Soaps only, Refillable 950 ml, white [MC 1030], gray [MC 1035]

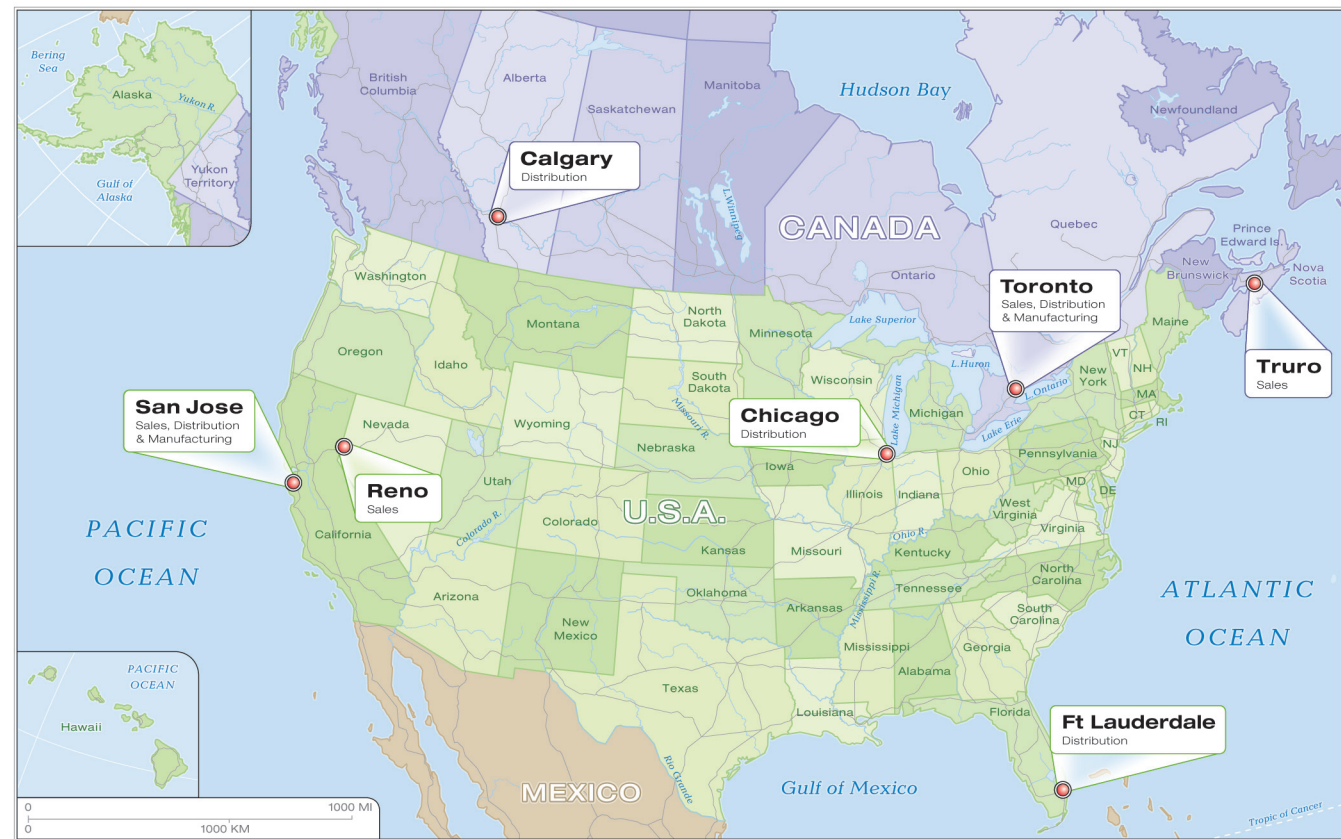
Impact Clear Vu Bulk Dispensers Available in gray or white with 30 oz. or 46 oz. refillable reservoirs
[MC 1060-W] WHITE SHOWN



The Dispenser
Available as single, double or triple units in a wide variety of colors and finishes. Each refillable chamber is 15 oz.
[MC 2003] WHITE SHOWN



dispensers



Petra is North America's largest manufacturer and distributor of locker room amenities.

Petra is more than just soap

- More than 15 years in the amenity business
- Friendly and knowledgeable sales representatives and staff
- Multiple sales and distribution locations for best service
- One stop shopping for all your locker room needs
- Best service, best products at the best prices... guaranteed

To make an inquiry, please call 1-800-463-2516 or e-mail us at info@petrasoap.com.

To place an order

Contact the Petra Order Desk from 8:30 am to 5:00 pm EST

Call (toll-free): 1-800-463-2516

Fax (toll-free): 1-888-329-7387

E-mail: order@petrasoap.com

Look for our "Online Order Desk" coming soon.

Orders received before 12 noon EST are usually shipped that same day. Orders received after 12 noon EST will be shipped the next business day. Qualifying clients are extended payment terms. All other orders can be paid for via C.O.D., most major credit cards or pre-payment. Petra will ship your order from the closest Petra Distribution Center to minimize shipping time and costs.



Associate Member of International Health, Racquet and Sportsclub Association

FPO.
 see cover file:
 Petra_Catalog-
 cover_MA.qxd